

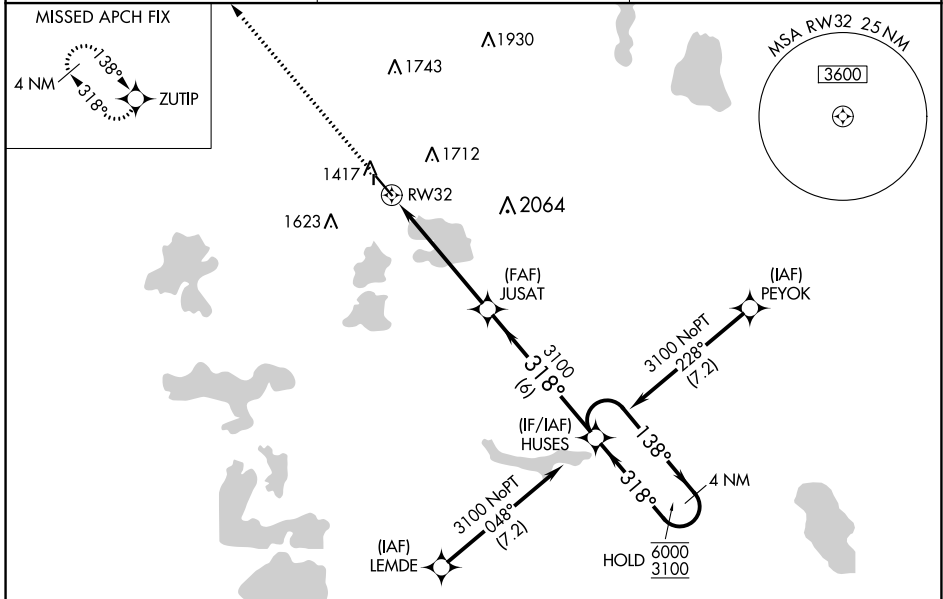
WAAS CH <b>86704</b> <b>W32A</b>	APP CRS <b>318°</b>	Rwy Idg TDZE Apt Elev	<b>5201</b> <b>1372</b> <b>1396</b>
--	------------------------	-----------------------------	---

# RNAV (GPS) RWY 32

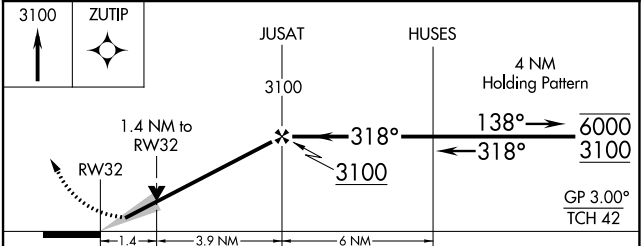
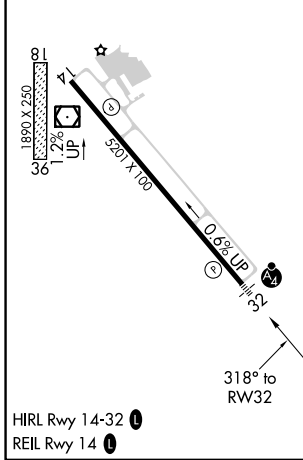
DETROIT LAKES/WETHING FLD (DTL)

RNP APCH-GPS.	MALSF	MISSED APPROACH: Climb to 3100 direct ZUTIP and hold.
<p>⚠ Circling NA to Rwy 18 and 36. Inop table does not apply to LPV.                  ⚠ For uncompensated Baro-VNAV systems, LNAV/VNAV NA below -17°C or above 54°C. For inop ALS, increase LNAV/VNAV all Cats visibility to ½ SM.</p>		

AWOS-3PT <b>119.075</b>	MINNEAPOLIS CENTER <b>126.1 269.2</b>	UNICOM <b>122.8 (CTAF)</b>
----------------------------	--	-------------------------------



ELEV 1396	TDZE 1372
-----------	-----------



CATEGORY	A	B	C	D
LPV DA	1622- <sup>3</sup> / <sub>4</sub> 250 (300- <sup>3</sup> / <sub>4</sub> )			
LNAV/VNAV DA	1656- <sup>3</sup> / <sub>4</sub> 284 (300- <sup>3</sup> / <sub>4</sub> )			
LNAV MDA	1860- <sup>3</sup> / <sub>4</sub>	488 (500- <sup>3</sup> / <sub>4</sub> )	1860-1 <sup>1</sup> / <sub>8</sub>	488 (500-1 <sup>1</sup> / <sub>8</sub> )
<b>C</b> CIRCLING	1860-1	464 (500-1)	2080-2 684 (700-2)	2140-2 <sup>1</sup> / <sub>2</sub> 744 (800-2 <sup>1</sup> / <sub>2</sub> )

NC-1, 22 FEB 2024 to 21 MAR 2024

NC-1, 22 FEB 2024 to 21 MAR 2024