

FORT BELVOIR, VIRGINIA

RNAV (GPS) RWY 14

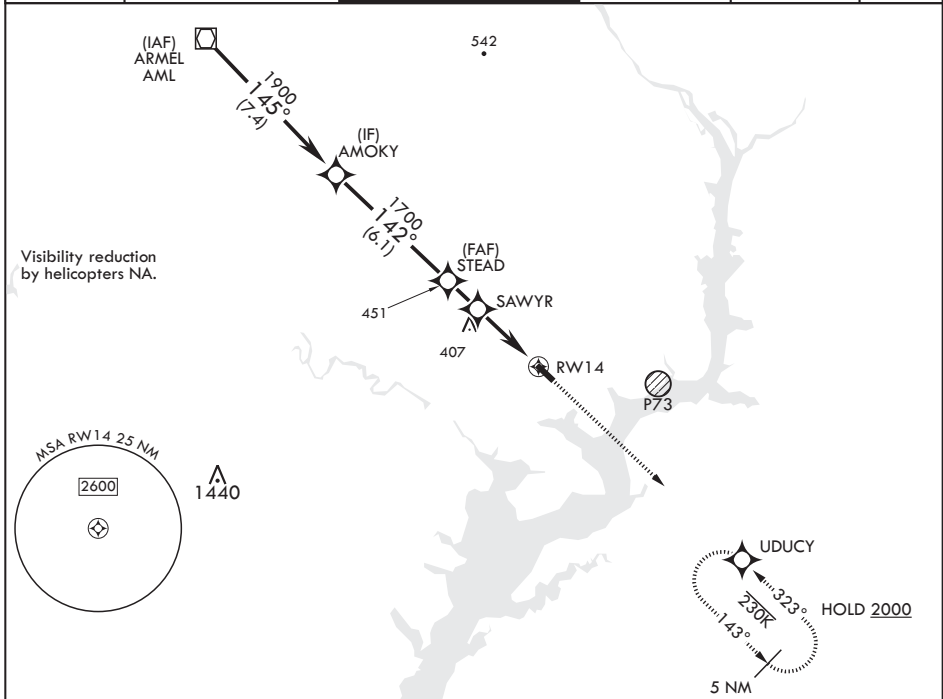
APCH CRS	Rwy Idg	4930
142°	TDZE	60
	Arprt Elev	74

-(USA)

DAVISON AAF (KDAV)

RNP APCH - GPS	MISSED APPROACH: Climb to 2000 direct UDCY and hold.
<p>▼ * If local altimeter setting not received, use Ronald Reagan Washington National altimeter setting.</p>	

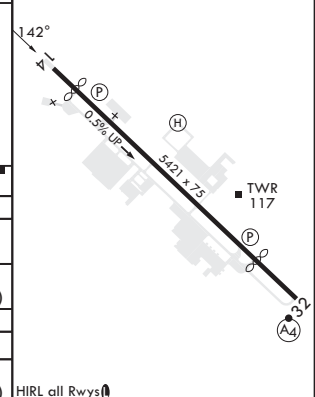
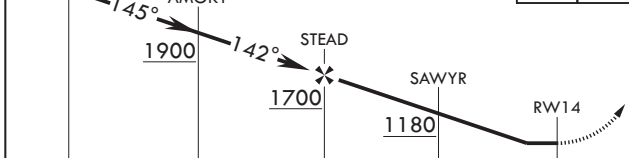
ATIS 128.175	POTOMAC APP CON 118.95 319.1	TOWER * 124.275 (CTAF) 0 229.4	GND CON 121.9 351.8	CLNC DEL 351.8	PAR
-----------------	---------------------------------	-----------------------------------	------------------------	-------------------	-----



NE-3, 22 FEB 2024 to 21 MAR 2024

NE-3, 22 FEB 2024 to 21 MAR 2024

VOR/DME	Visual Segments - Obstacles	2000 UDCY	ELEV 74	TDZE 60
				Rwy 14 Idg 4930' Rwy 32 Idg 4529'



	1.6 NM		3.3 NM	
CATEGORY	A	B	C	D
LNAV MDA	660-1	600 (600-1)	660-1¼ 600 (600-1¼)	660-2 600 (600-2)
CIRCLING	740-1	666 (700-1)	740-1¼ 666 (700-1¼)	760-2¼ 686 (700-2¼)
*RONALD REAGAN WASHINGTON NATIONAL ALTIMETER SETTING MINIMUMS				
LNAV MDA	700-1	640 (700-1)	700-2	640 (700-2)
CIRCLING	780-1	706 (800-1)	780-2 706 (800-2)	800-2¼ 726 (800-2¼)

FORT BELVOIR, VIRGINIA
Amdt 3 30NOV23

38°43'N - 77°11'W

DAVISON AAF (KDAV)

RNAV (GPS) RWY 14