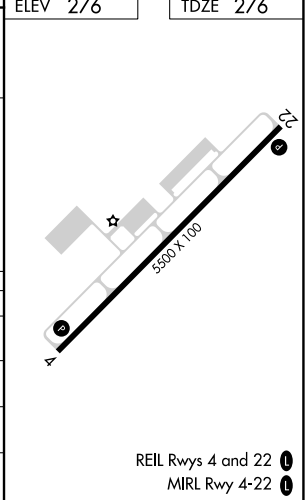
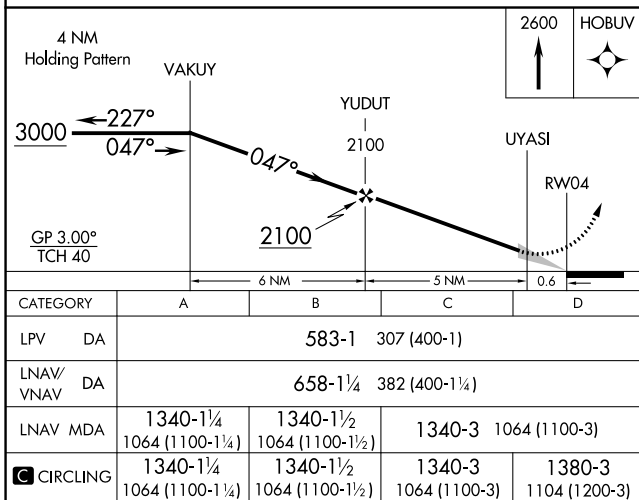
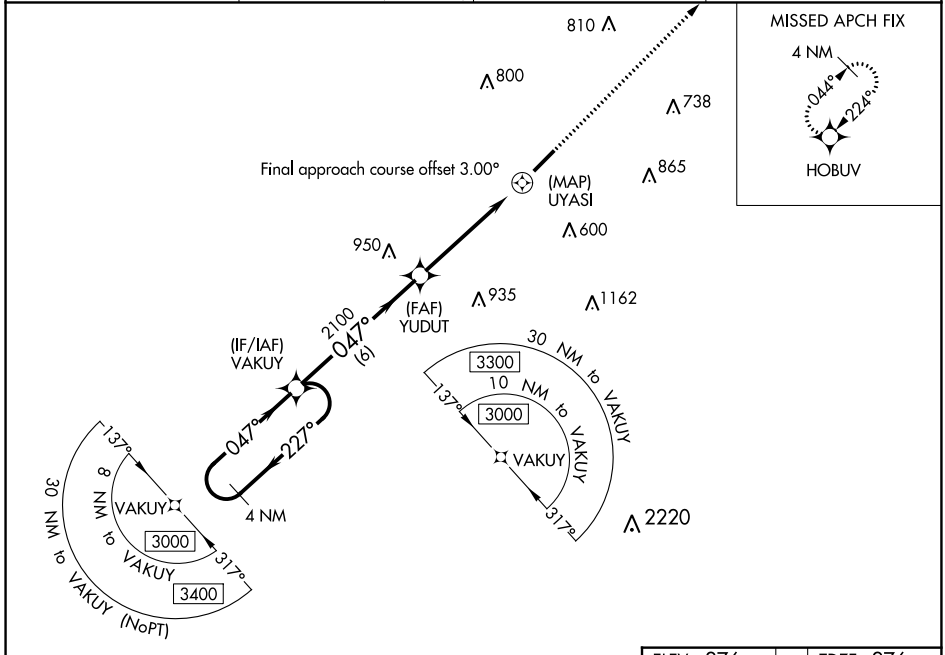


WAAS CH <b>97338</b> <b>W04A</b>	APP CRS <b>047°</b>	Rwy Idg TDZE <b>276</b> Apt Elev <b>276</b>	<b>5500</b>
--	------------------------	---	-------------

# RNAV (GPS) RWY 4

CONWAY RGNL (CXW)

<p><b>Baro-VNAV NA.</b> Use Bill and Hillary Clinton National/Adams Field altimeter setting; when not received, procedure NA. DME/DME RNP-0.3 NA.</p>	<p>MISSED APPROACH: Climb to 2600 direct HOBUV and hold.</p>		
<p>AWOS-2 <b>118.775</b></p>	<p>LITTLE ROCK APP CON <b>135.4 353.6</b> (040°-239°) <b>119.5 306.2</b> (240°-039°)</p>	<p>CLNC DEL <b>121.2</b></p>	<p>UNICOM <b>123.05 (CTAF)</b> <b>0</b></p>



SC-1, 22 FEB 2024 to 21 MAR 2024

SC-1, 22 FEB 2024 to 21 MAR 2024