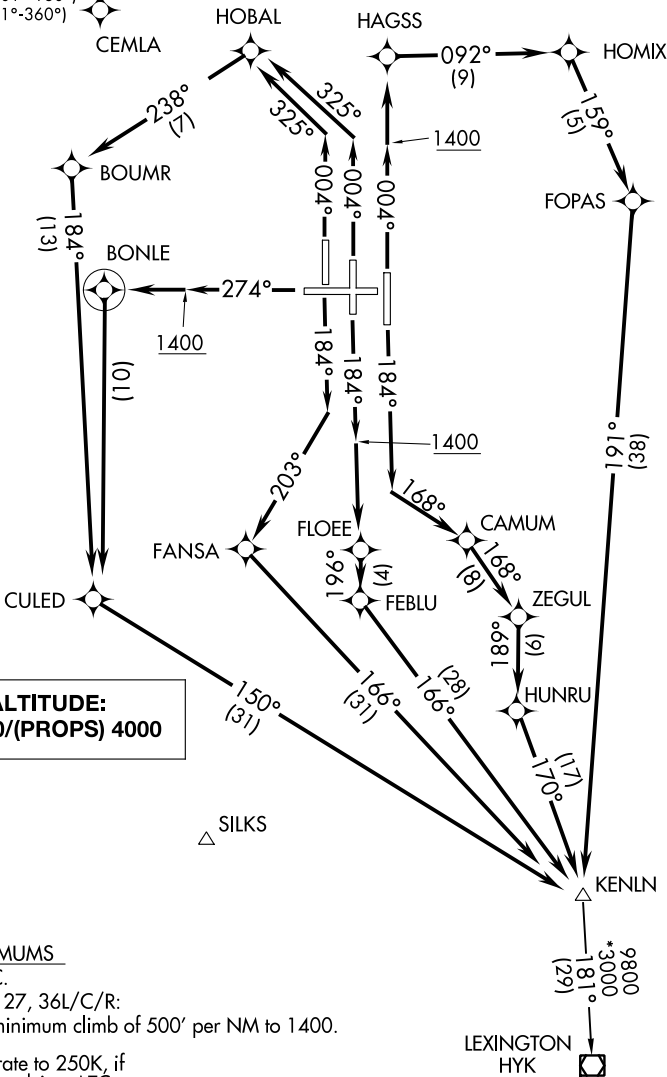


D-ATIS DEP 135.3
CLNC DEL 127.175
CPDLC
GND CON 121.7
CINCINNATI TOWER
118.3 360.85 (RWYS 18C/36C, 9/27)
118.975 360.85 (RWY 18L/36R)
133.325 360.85 (RWY 18R/36L)
CINCINNATI DEP CON
126.65 254.25 (001°-180°)
128.7 254.25 (181°-360°)

NOTE: If unable to accept climb rates, advise ATC on initial contact.
NOTE: DME/DME/IRU or GPS required.
NOTE: RADAR required.
NOTE: RNAV 1.
NOTE: Transponder code will be issued via PDC or Cincinnati CLNC DEL.



NOTE: Chart not to scale. (NARRATIVE ON FOLLOWING PAGE)



DEPARTURE ROUTE DESCRIPTION

TAKEOFF RUNWAY 18L: Climb heading 184° to intercept course 168° to CAMUM, then on depicted route to KENLN, thence. . . .

TAKEOFF RUNWAY 18C: Climb heading 184° to 1400, then direct FLOEE, then on depicted route to KENLN, thence. . . .

TAKEOFF RUNWAY 18R: Climb heading 184° to intercept course 203° to FANSA, then on depicted route to KENLN, thence. . . .

TAKEOFF RUNWAY 27: Climb heading 274° to 1400, then direct BONLE, then left turn direct CULED, then on depicted route to KENLN, thence. . . .

TAKEOFF RUNWAY 36R: Climb heading 004° to 1400, then direct HAGSS, then on depicted route to KENLN, thence. . . .

TAKEOFF RUNWAY 36C: Climb heading 004° to intercept course 325° to HOBAL, then on depicted route to KENLN, thence. . . .

TAKEOFF RUNWAY 36L: Climb heading 004° to intercept course 325° to HOBAL, then on depicted route to KENLN, thence. . . .

. . . . turbo jet aircraft maintain 6000, all other aircraft maintain 4000. Expect clearance to filed altitude within 10 minutes after departure.

LEXINGTON TRANSITION (KENLN5.HYK)

SE-1, 22 FEB 2024 to 21 MAR 2024

SE-1, 22 FEB 2024 to 21 MAR 2024