

(CRVZA.CRVZA1) 25JAN24

CRVZA ONE ARRIVAL (RNAV) Transition Routes

SAN ANTONIO, TEXAS

SAN ANTONIO APP CON  
125.7 290.225  
BAZ ATIS  
119.325  
KRND ATIS ★  
290.525  
KSKF ATIS  
120.45 273.5  
SAT D-ATIS  
118.9  
SSF ATIS  
128.8

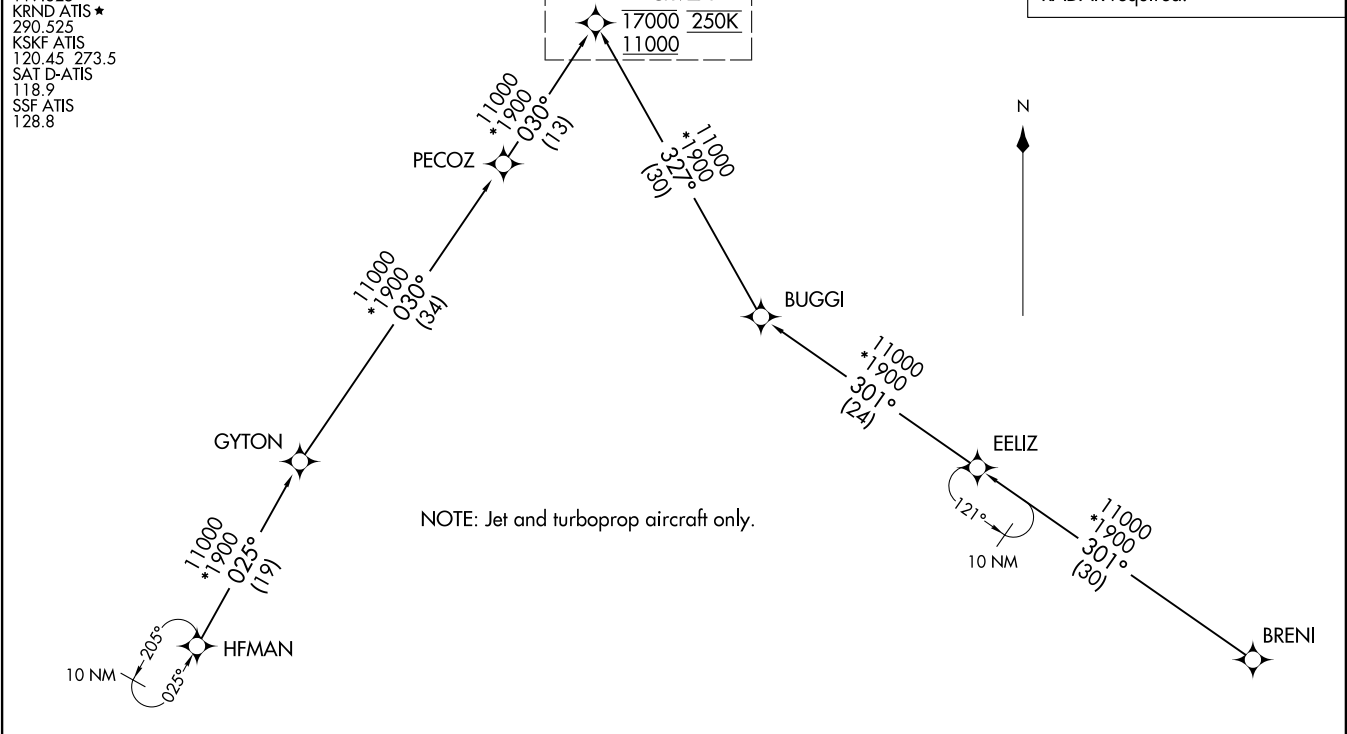
See following page  
for Arrival Routes

CRVZA
17000 250K
11000

RNAV 1 - DME/DME/IRU or GPS.  
RADAR required.

(CRVZA.CRVZA1) 24025  
AL-369 (FAA)  
CRVZA ONE ARRIVAL (RNAV) Transition Routes

SAN ANTONIO, TEXAS



NOTE: Jet and turboprop aircraft only.

BRENI TRANSITION (BRENI.CRVZA1)  
EELIZ TRANSITION (EELIZ.CRVZA1)  
HFMAN TRANSITION (HFMAN.CRVZA1)

(CONTINUED ON FOLLOWING PAGE)

NOTE: Chart not to scale.

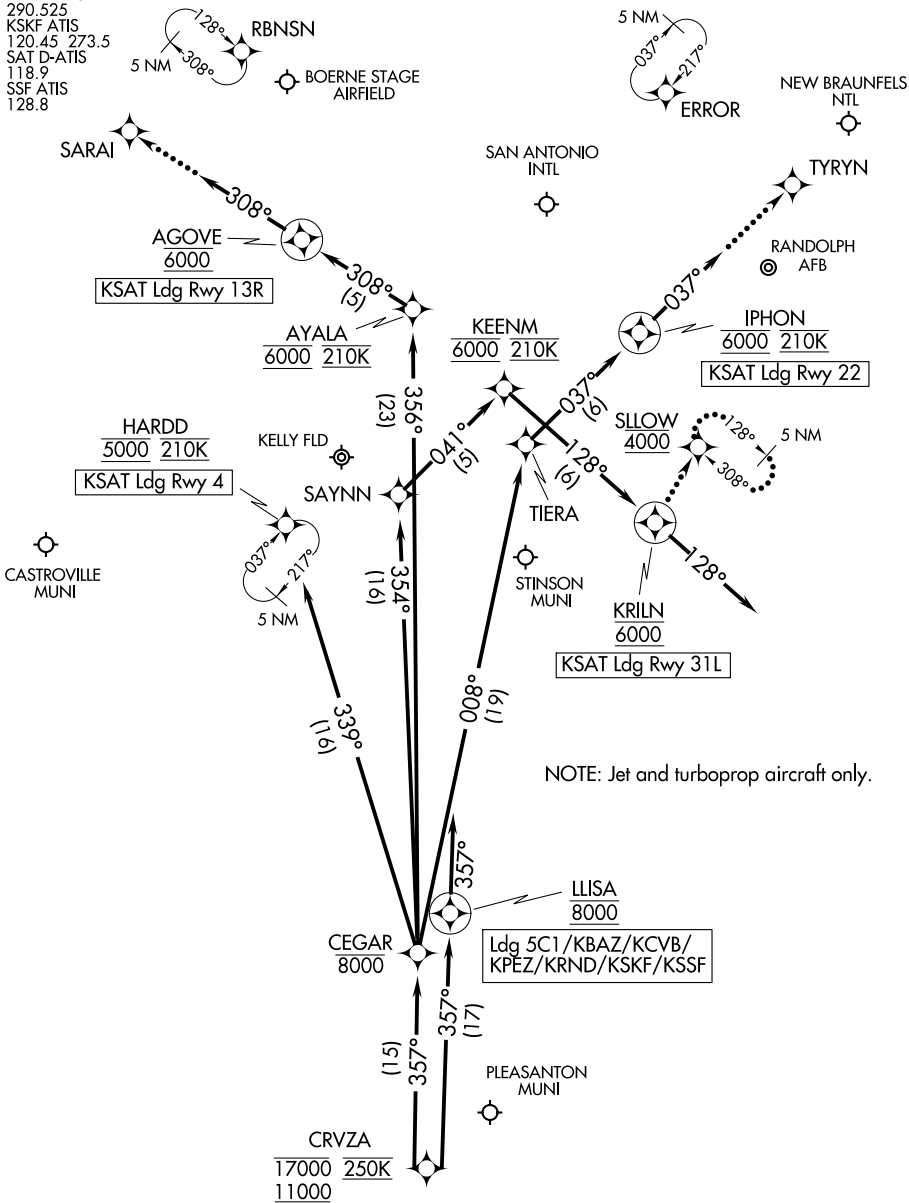
# CRVZA ONE ARRIVAL (RNAV) Arrival Routes

SAN ANTONIO, TEXAS

SAN ANTONIO APP CON  
 125.7 290.225  
 BAZ ATIS  
 119.325  
 KRND ATIS ★  
 290.525  
 KSKF ATIS  
 120.45 273.5  
 SAT D-ATIS  
 118.9  
 SSF ATIS  
 128.8

RNAV 1 - DME/DME/IRU or GPS.

RADAR required.



NOTE: Chart not to scale.

(CONTINUED ON FOLLOWING PAGE)

# CRVZA ONE ARRIVAL (RNAV) Arrival Routes

SAN ANTONIO, TEXAS