

WAAS CH <b>58038</b> <b>W12A</b>	APP CRS <b>125°</b>	Rwy Idg <b>4000</b> TDZE <b>1121</b> Apt Elev <b>1125</b>
--	------------------------	---

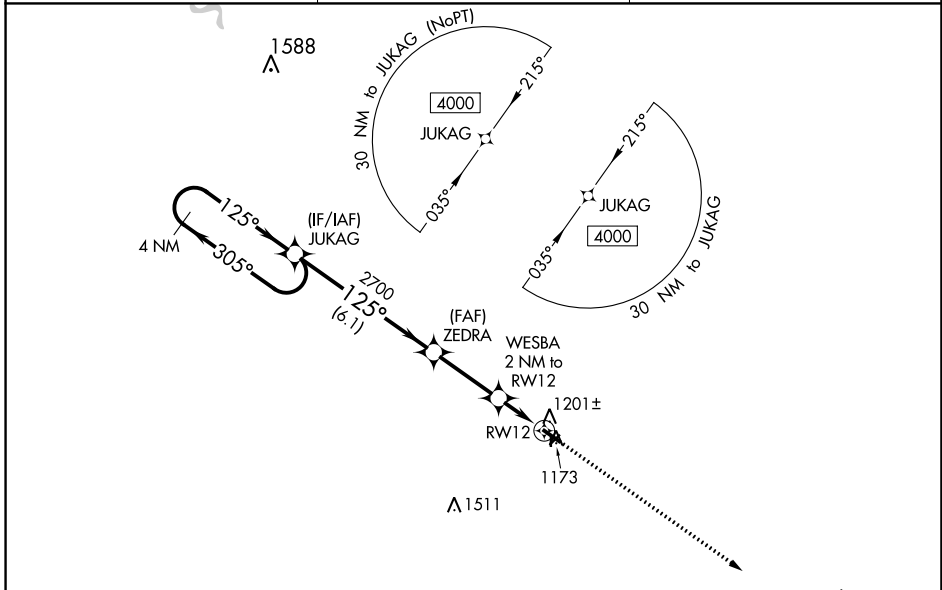
# RNAV (GPS) RWY 12

NORTHEAST IOWA RGNL (CCY)

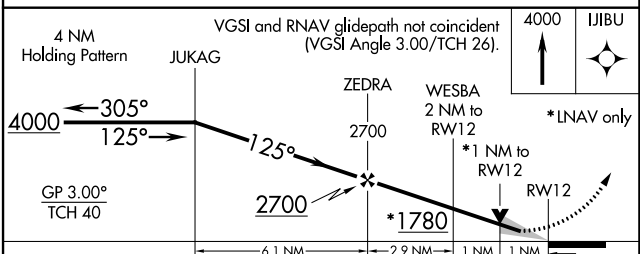
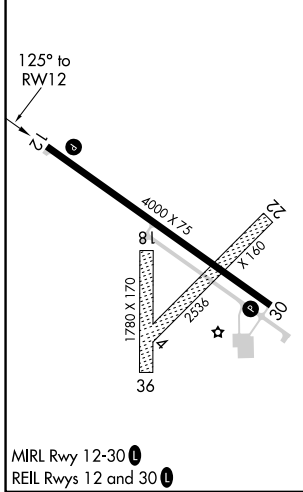
**⚠** For uncompensated Baro-VNAV systems, LNAV/VNAV NA below -17°C (2°F) or above 54°C (130°F). DME/DME RNP-0.3 NA. When local altimeter setting not received, use Waterloo altimeter setting and increase all DA 110 feet and visibilities ¼ mile. Increase all MDA 120 feet and increase LNAV Cat C visibility ⅜ mile, and Circling visibility Cat C ½ mile. VDP and Baro-VNAV NA when using Waterloo altimeter setting. Circling Rwy 4-22 and 18-36 NA.

**MISSED APPROACH:** Climb to 4000 direct IJIBU and hold, continue climb-in-hold to 4000.

AWOS-3 <b>125.525</b>	WATERLOO APP CON ★ <b>118.9 251.15</b>	UNICOM <b>122.8 (CTAF) 0</b>
--------------------------	---	---------------------------------



ELEV 1125	TDZE 1121
-----------	-----------



CATEGORY	A	B	C	D
LPV DA	1371-1	250 (300-1)		NA
LNAV/VNAV DA	1371-1	250 (300-1)		NA
LNAV MDA	1460-1	339 (400-1)		NA
<b>C</b> CIRCLING	1520-1 395 (400-1)	1580-1 455 (500-1)	1760-1¾ 635 (700-1¾)	NA

NC-3, 22 FEB 2024 to 21 MAR 2024

NC-3, 22 FEB 2024 to 21 MAR 2024