

WAAS CH <b>52102</b> <b>W17A</b>	APP CRS <b>172°</b>	Rwy Idg <b>3532</b> TDZE <b>861</b> Apt Elev <b>861</b>
--	------------------------	---

# RNAV (GPS) RWY 17

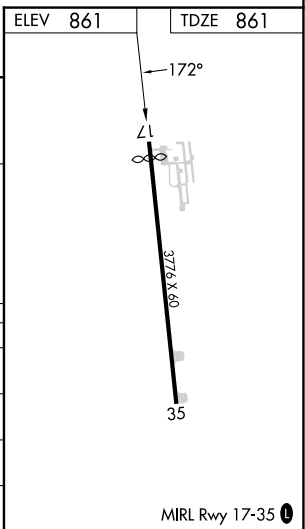
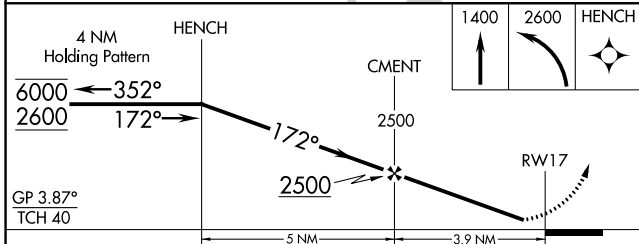
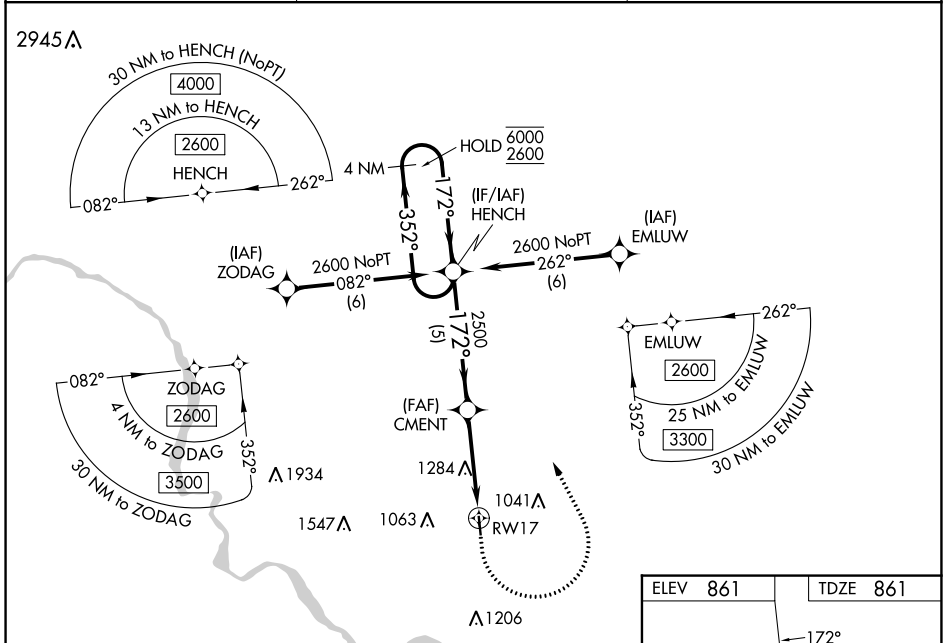
MARION (C17)

RNP APCH - GPS.

**NA** Baro-VNAV NA. Straight-in Rwy 17, NA at night. Circling NA for Cat B west of Rwy 17/35. Use The Eastern Iowa altimeter setting; when not received, use Monticello Rgnl altimeter setting; increase LPV DA to 1162; increase LNAV/VNAV DA to 1670; increase all MDAs 40 feet. For uncompensated Baro-VNAV system, LNAV/VNAV NA below -6°C or above 54°C. Rwy 17, helicopter visibility reduction below 1 SM NA.

MISSED APPROACH: Climb to 1400 then climbing left turn to 2600 direct HENCH and hold.

CID ASOS <b>124.15</b>	CEDAR RAPIDS APP CON * <b>134.05 266.8</b>	UNICOM <b>122.7 (CTAF) 0</b>
---------------------------	---	---------------------------------



CATEGORY	A	B	C	D
LPV DA	1140-1	279 (300-1)		NA
LNAV/VNAV DA	1648-2½	787 (800-2½)		NA
LNAV MDA	1560-1	699 (700-1)		NA
CIRCLING	1560-1 699 (700-1)	1620-1 759 (800-1)		NA

NC-3, 22 FEB 2024 to 21 MAR 2024

NC-3, 22 FEB 2024 to 21 MAR 2024

WAAS CH <b>98719</b> <b>W35A</b>	APP CRS <b>352°</b>	Rwy Idg TDZE <b>861</b> Apt Elev <b>861</b>
--	------------------------	---

# RNAV (GPS) RWY 35

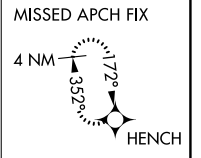
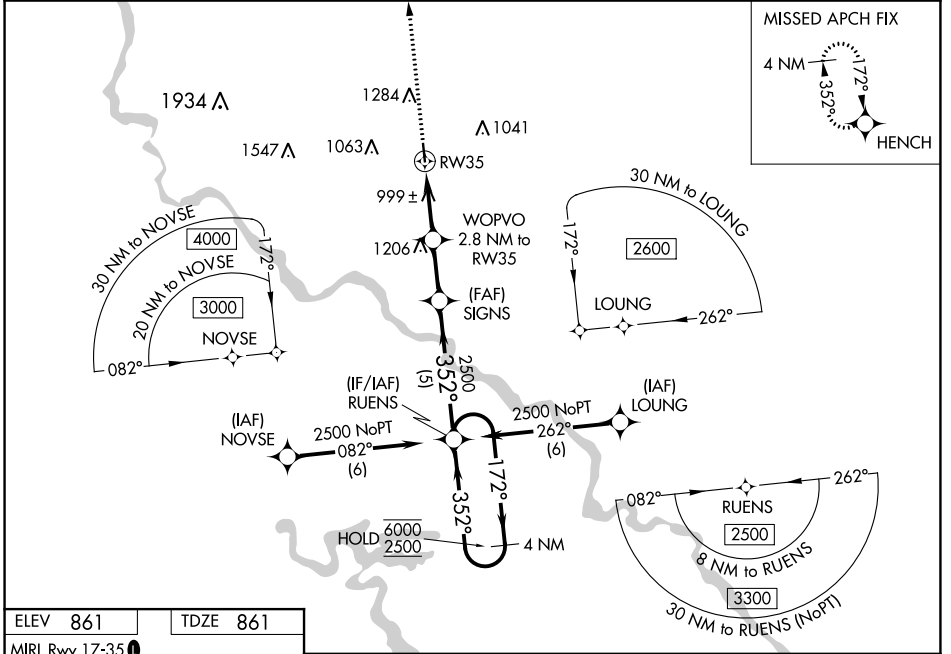
MARION (C17)

RNP APCH - GPS.

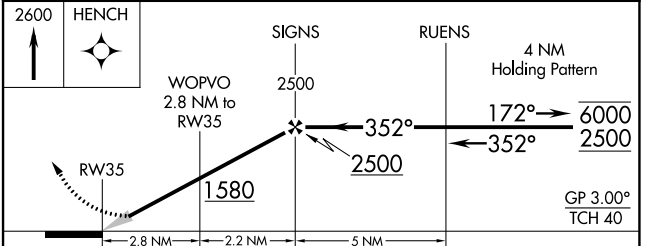
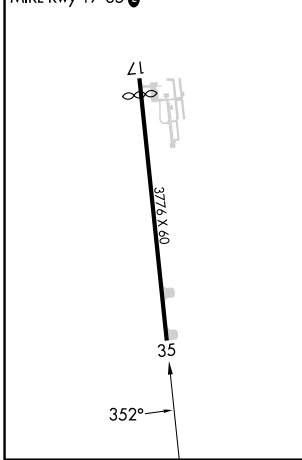
**NA** Baro-VNAV NA. Circling Rwy 17, NA at night. Circling NA for Cat B west of Rwy 17/35. Use The Eastern Iowa altimeter setting; when not received, use Monticello Rgnl altimeter setting; increase LPV DA to 1133; increase LNAV/VNAV DA to 1162; increase all MDAs 40 feet. For uncompensated Baro-VNAV system, LNAV/VNAV NA below -6°C or above 54°C.

MISSED APPROACH: Climb to 2600 direct HENCH and hold.

CID ASOS <b>124.15</b>	CEDAR RAPIDS APP CON * <b>134.05 266.8</b>	UNICOM <b>122.7 (CTAF) 0</b>
---------------------------	---	---------------------------------



ELEV 861	TDZE 861
----------	----------



CATEGORY	A	B	C	D
LPV DA	1111-1	250 (300-1)		NA
LNAV/VNAV DA	1140-1	279 (300-1)		NA
LNAV MDA	1280-1	419 (500-1)		NA
CIRCLING	1280-1 419 (500-1)	1340-1 479 (500-1)		NA

NC-3, 22 FEB 2024 to 21 MAR 2024

NC-3, 22 FEB 2024 to 21 MAR 2024