

(BUF8.BUF) 23334

# BUFFALO EIGHT DEPARTURE

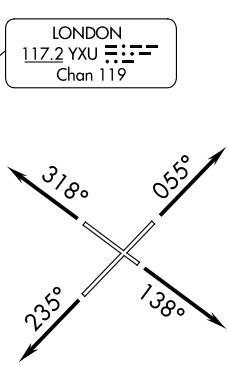
AL-65 (FAA)

BUFFALO NIAGARA INTL (BUF)  
BUFFALO, NEW YORK

D-ATIS 135.35  
CLNC DEL  
124.7 257.8  
CPDLC  
GND CON  
133.2 257.8  
BUFFALO TOWER  
120.5 257.8  
BUFFALO DEP CON  
126.15 263.125

**TAKEOFF MINIMUMS:**  
Rwys 5, 14, 23, 32: Standard.

**TOP ALTITUDE:**  
**10000**



LONDON  
117.2 YXU  
Chan 119

ROCHESTER  
110.0 ROC  
Chan 37

SYRACUSE  
117.0 SYR  
Chan 117

GENESEEO  
108.2 GEE  
Chan 19

JAMESTOWN  
114.7 JHW  
Chan 94

STONYFORK  
108.6 SFK  
Chan 23

DRYER  
113.6 DJB  
Chan 83

SLATE RUN  
113.9 SLT  
Chan 86

NOTE: RADAR required.

NOTE: Chart not to scale.

## DEPARTURE ROUTE DESCRIPTION

- TAKEOFF RUNWAY 5:** Climb heading 055° until leaving 3000. Thence. . .
- TAKEOFF RUNWAY 14:** Climb heading 138° until leaving 3000. Thence. . .
- TAKEOFF RUNWAY 23:** Climb heading 235° until leaving 3000. Thence. . .
- TAKEOFF RUNWAY 32:** Climb heading 318° until leaving 3000. Thence. . .

**NON-TURBOJET AIRCRAFT ONLY:** Climb on assigned heading, thence. . .  
. . . vectors to assigned route/fix. Maintain 10000 or assigned lower altitude.  
Expect clearance to filed altitude/flight level ten (10) minutes after departure.

NE-2, 22 FEB 2024 to 21 MAR 2024

NE-2, 22 FEB 2024 to 21 MAR 2024

# BUFFALO EIGHT DEPARTURE

(BUF8.BUF) 02DEC21

BUFFALO, NEW YORK  
BUFFALO NIAGARA INTL (BUF)