

SOUTH KAUAI-SIX DEPARTURE (OBSTACLE) (SOK6.SOK)

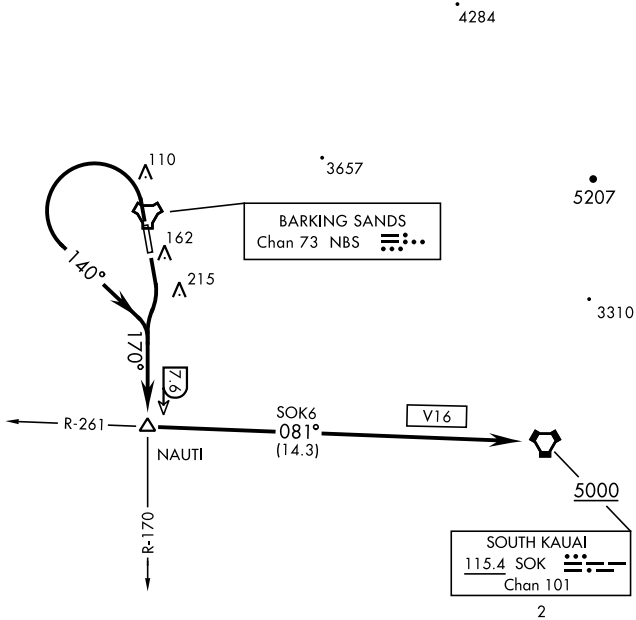
KEKAHA, KAUAI I, HAWAII

BARKING SANDS TOWER ★
 126.2 360.2
 HCF APP
 126.5 269.4

AL-767 [USN]

Rwy	Knots	60	120	180	240	300	360
16	V/V(fpm)	300	600	900	1200	1500	1800
34	V/V(fpm)	260	520	780	1040	1300	1560

ATC Climb Rate to 5000



PAC, 25 JAN 2024 to 21 MAR 2024

PAC, 25 JAN 2024 to 21 MAR 2024

DEPARTURE ROUTE DESCRIPTION

TAKEOFF RWY 16: Climbing right turn to intercept NBS TACAN R-170 to NAUTI, thence...

TAKEOFF RWY 34: Climbing left turn heading 140° to intercept NBS TACAN R-170 to NAUTI, thence...

...turn left to intercept SOK VORTAC R-261(V16) direct SOK. Cross SOK at or above 5000.

SOUTH KAUAI-SIX DEPARTURE (OBSTACLE) (SOK6.SOK)

KEKAHA, KAUAI I, HAWAII