

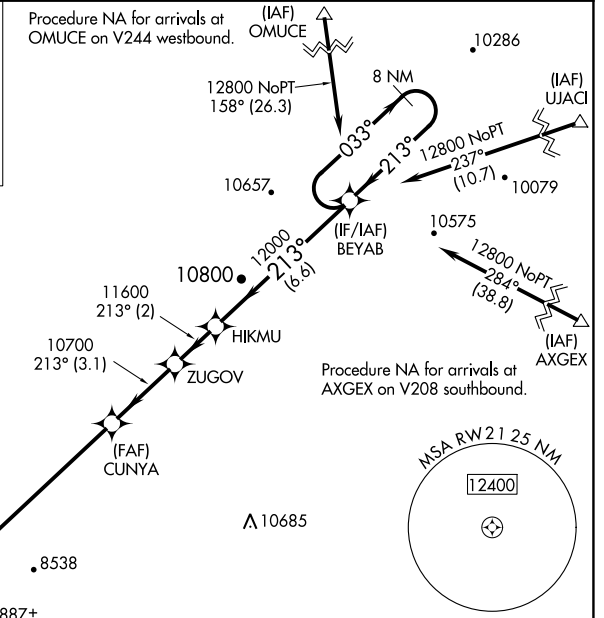
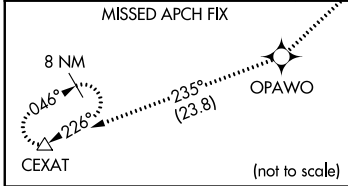
# RNAV (GPS) RWY 21

BRYCE CANYON (BCE)

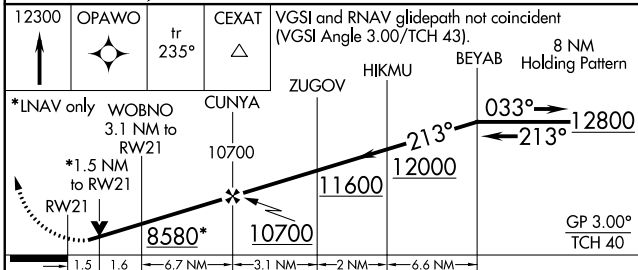
WAAS CH <b>99516</b> <b>W21A</b>	APP CRS <b>213°</b>	Rwy Idg TDZE Apt Elev	<b>7395</b> <b>7564</b> <b>7590</b>
--	------------------------	-----------------------------	---

RNP APCH. ▼ For uncompensated Baro-VNAV systems, LNAV/VNAV NA below -30°C or above 54°C. When local altimeter setting not received, procedure NA. Rwy 21 helicopter visibility reduction below ¼ SM NA.	MISSED APPROACH: Climb to 12300 direct OPAWO and on track 235° to CEXAT and hold.
--	---

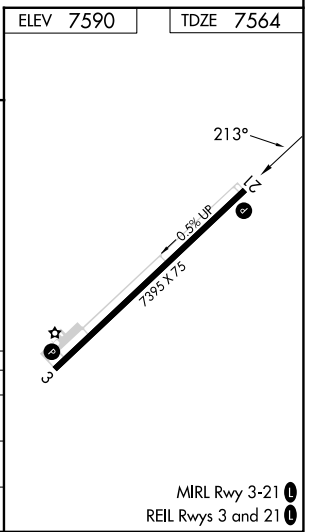
ASOS <b>135.475</b>	SALT LAKE CITY CENTER <b>133.6 269.25</b>	UNICOM <b>122.8 (CTAF)</b> <b>0</b>
------------------------	--	--



12300	OPAWO	ir 235°	CEXAT	VGSI and RNAV glidepath not coincident (VGSI Angle 3.00/TCH 43).	8 NM Holding Pattern
*LNAV only WOBNO 3.1 NM to RW21		CUNYA		ZUGOV	HIKMU
*1.5 NM to RW21		10700		11600	12000
8580*		10700		12800	
1.5		1.6		6.6 NM	



CATEGORY	A	B	C	D
LPV DA	7889-1 1/8 325 (300-1 1/8)			NA
LNAV/VNAV DA	8016-1 1/2 452 (500-1 1/2)			NA
LNAV MDA	8040-1 476 (500-1)		8040-1 3/8 476 (500-1 3/8)	NA



SW-4, 22 FEB 2024 to 21 MAR 2024

SW-4, 22 FEB 2024 to 21 MAR 2024