

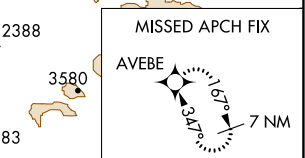
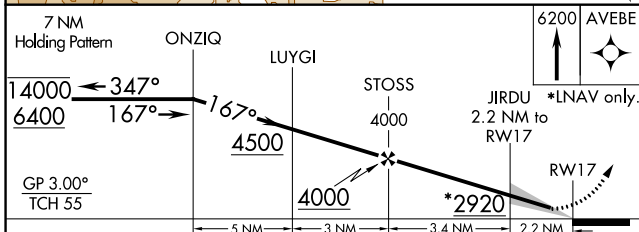
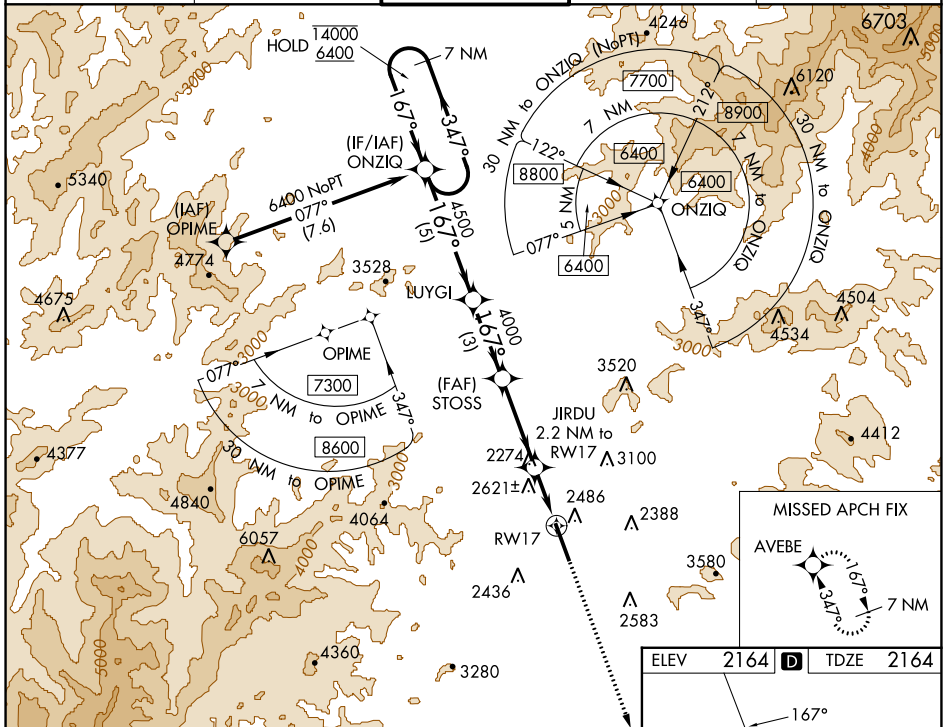
WAAS CH <b>93641</b> <b>W17A</b>	APP CRS <b>167°</b>	Rwy ldg TDZE Apt Elev	<b>8001</b> <b>2164</b> <b>2164</b>
--	------------------------	-----------------------------	---

# RNAV (GPS) RWY 17

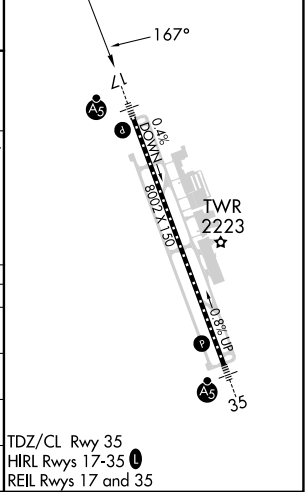
ASHEVILLE RGNL (AVL)

RNP APCH.	MALSR	MISSED APPROACH: Climb to 6200 direct AVEBE and hold, continue climb-in-hold to 6200.
<p>▼ Circling NA west of Rwy 17-35. For uncompensated Baro-VNAV systems, LNAV/VNAV NA below -13°C or above 54°C. For inop ALS, increase LNAV/VNAV all Cats visibility to 2½ SM and increase LNAV Cats C/D visibility to 2 SM.</p>		

ATIS <b>120.2</b>	ASHEVILLE APP CON* <b>124.65 351.8</b>	ASHEVILLE TOWER* <b>121.1 (CTAF) 0 257.8</b>	GND CON <b>121.9</b>	UNICOM <b>122.95</b>
----------------------	---	---	-------------------------	-------------------------



ELEV	2164	TDZE	2164
------	------	------	------



CATEGORY	A	B	C	D
LPV DA		2364-½	200 (200-½)	
LNAV/VNAV DA		2960-1¾	796 (800-1¾)	
LNAV MDA	2880-½	716 (800-½)	2880-1⅝	716 (800-1⅝)
CIRCLING	2880-1	716 (800-1)	3460-3 1296 (1300-3)	3720-3 1556 (1600-3)

TDZ/CL Rwy 35  
HIRL Rwys 17-35  
REL Rwys 17 and 35

SE-2, 22 FEB 2024 to 21 MAR 2024

SE-2, 22 FEB 2024 to 21 MAR 2024