

WAAS CH <b>93734</b> <b>W35A</b>	APP CRS <b>351°</b>	Rwy Idg TDZE <b>762</b> Apt Elev <b>782</b>	<b>4996</b>
--	------------------------	---	-------------

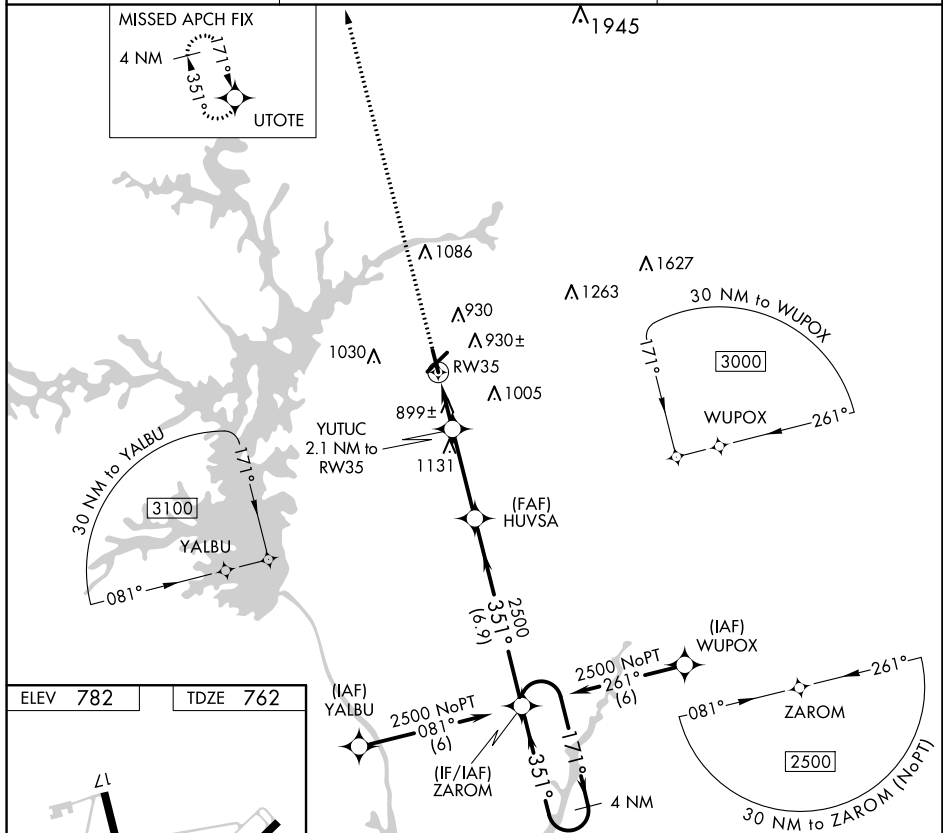
# RNAV (GPS) RWY 35

ANDERSON RGNL (AND)

**⚠** DME/DME RNP-0.3 NA. When local altimeter setting not received, use Clemson altimeter setting and increase all MDA 60 feet; increase all Cats C and D visibility 1/2 mile. Straight-in Rwy 35 NA at night, Circling Rwy 17, 35 NA at night. Rwy 17, 35 helicopter visibility reduction below 1 SM NA.

**⚠** MISSED APPROACH: Climb to 3200 direct UTOTE and hold.

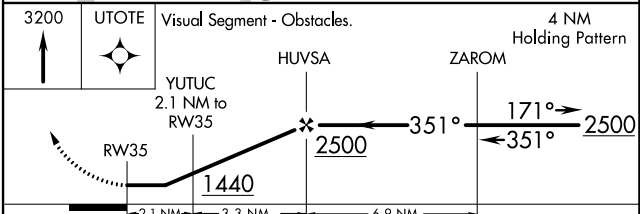
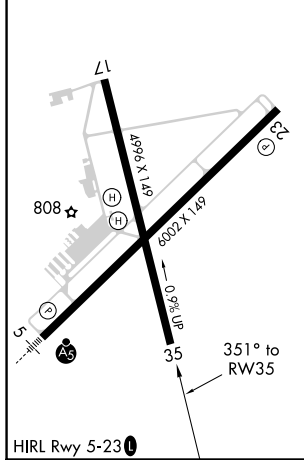
ASOS <b>120.675</b>	GREER APP CON ★ <b>118.8 270.275</b>	CTAF <b>123.60</b>
------------------------	---	-----------------------



SE-2, 22 FEB 2024 to 21 MAR 2024

SE-2, 22 FEB 2024 to 21 MAR 2024

ELEV 782	TDZE 762
----------	----------



CATEGORY	A	B	C	D
LP MDA	1160-1	398 (400-1)	1160-1 <sup>1</sup> / <sub>8</sub>	398 (400-1 <sup>1</sup> / <sub>8</sub> )
LNAV MDA	1180-1	418 (400-1)	1180-1 <sup>1</sup> / <sub>4</sub>	418 (400-1 <sup>1</sup> / <sub>4</sub> )
<b>C</b> CIRCLING	1260-1 478 (500-1)	1320-1 538 (600-1)	1440-1 <sup>3</sup> / <sub>4</sub> 658 (700-1 <sup>3</sup> / <sub>4</sub> )	1500-2 <sup>1</sup> / <sub>4</sub> 718 (800-2 <sup>1</sup> / <sub>4</sub> )