

WAAS CH 69240 W04A	APP CRS 038°	Rwy Idg TDZE Apt Elev	9207 4150 4200
--	------------------------	-----------------------------	---

RNAV (GPS) RWY 4

ALAMOGORDO-WHITE SANDS RGNL (A.I.M)

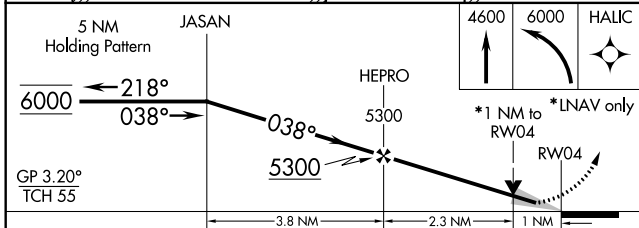
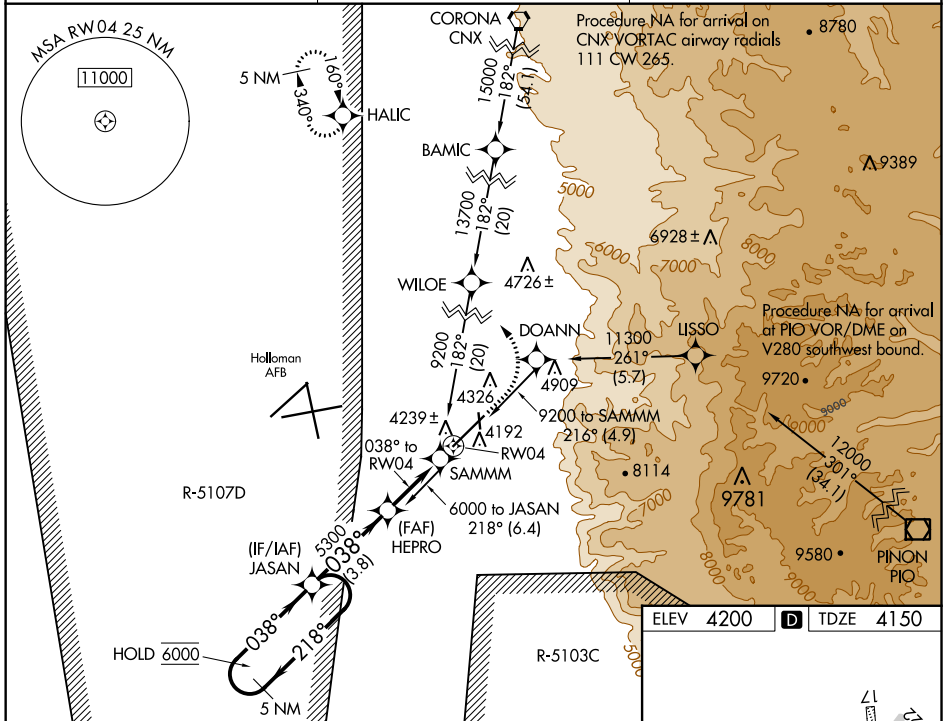
RNP APCH.

⚠ Circling NA to Rwy 17 and 35. Circling NA for Cats C and D southeast of Rwy 4-22.

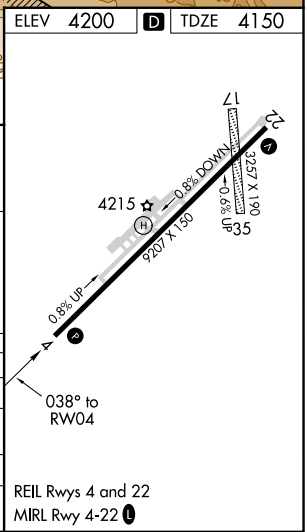
⚠ For uncompensated Baro-VNAV systems, LNAV/VNAV NA below -23°C or above 54°C. Civil aircraft require ATC clearance prior to entering Restricted Area 5107D.

MISSED APPROACH: Climb to 4600 then climbing left turn to 6000 direct HALIC and hold.

AWOS-3 127.825	HOLLOMAN APP CON * 120.6 269.225	UNICOM 122.8 (CTAF) 0
--------------------------	--	---------------------------------



CATEGORY	A	B	C	D
LPV DA		4400-1	250 (200-1)	
LNAV/VNAV DA		4420-1	270 (300-1)	
LNAV MDA		4500-1	350 (300-1)	
CIRCLING	4760-1	4880-1	4960-2¼	4960-2½
	560 (600-1)	680 (700-1)	760 (800-2¼)	760 (800-2½)



SW-1, 22 FEB 2024 to 21 MAR 2024

SW-1, 22 FEB 2024 to 21 MAR 2024