

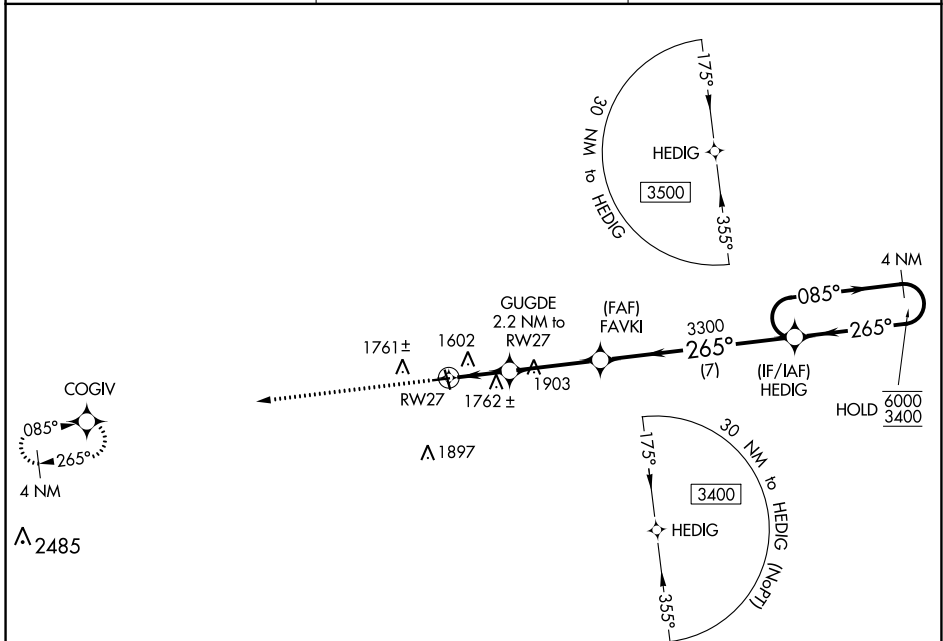
WAAS CH 45629 W27A	APP CRS 265°	Rwy Idg 3400 TDZE 1523 Apt Elev 1523
--	------------------------	---

RNAV (GPS) RWY 27

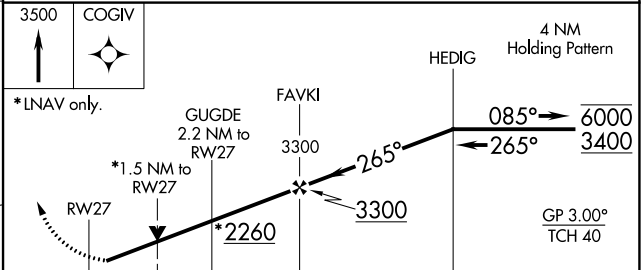
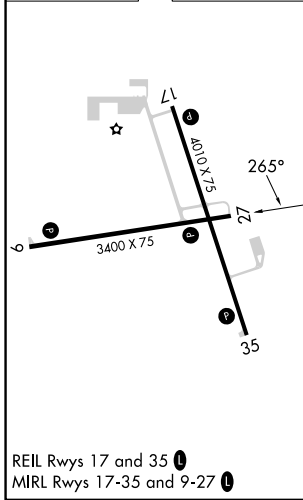
LANGLADE COUNTY (AIG)

RNP APCH.	MISSED APPROACH: Climb to 3500 direct COGIV and hold.
Rwy 27 helicopter visibility reduction below 3/4 SM NA. For uncompensated Baro-VNAV systems, LNAV/VNAV NA below -18°C or above 54°C.	

AWOS-3 119.075	MINNEAPOLIS CENTER 124.4 317.7	UNICOM 122.8 (CTAF) 0
--------------------------	--	---------------------------------



ELEV 1523	TDZE 1523
-----------	-----------



CATEGORY	A	B	C	D
LPV DA		1773-1	250 (300-1)	
LNAV/VNAV DA		1792-1	269 (300-1)	
LNAV MDA	2020-1	497 (500-1)	2020-1 3/8	497 (500-1 3/8)
<input checked="" type="checkbox"/> CIRCLING	2120-1	597 (600-1)	2260-2 737 (800-2)	2260-2 1/4 737 (800-2 1/4)

EC-3, 22 FEB 2024 to 21 MAR 2024

EC-3, 22 FEB 2024 to 21 MAR 2024