

CAMP SPRINGS, MARYLAND

RNAV (GPS) RWY 19L

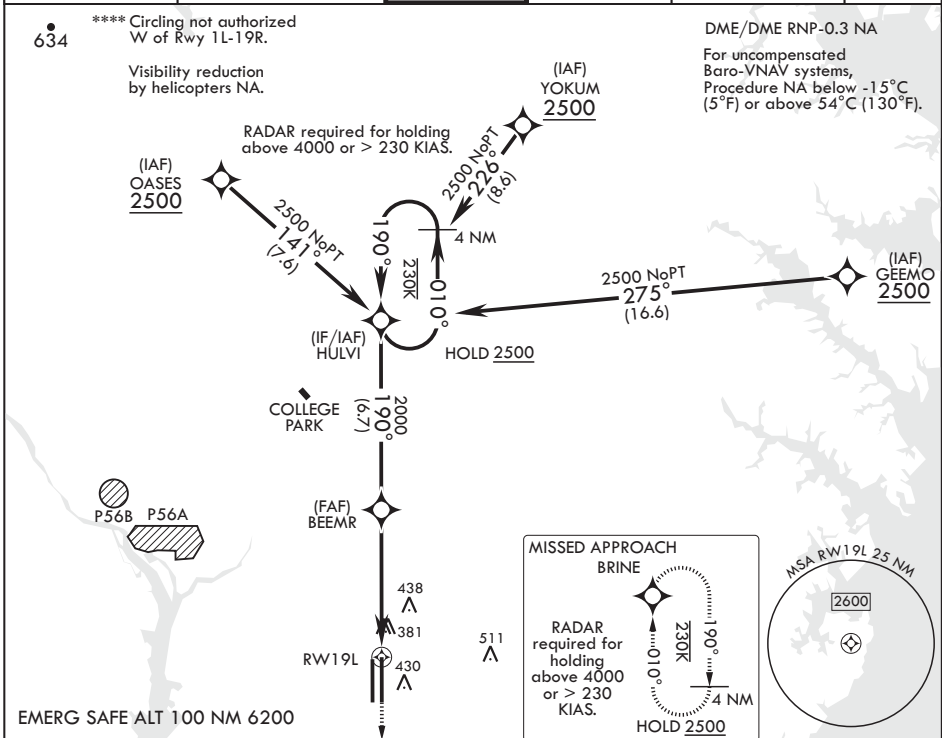
WAAS CH 52203 W19A	APCH CRS 190°	Rwy ldg TDZE 279 Arpt Elev 280	9756 279 280
--------------------------	------------------	--------------------------------------	--------------------

AL-561 (USAF)

JOINT BASE ANDREWS (KADW)

<p>⚠ MISSED APPROACH: Climb to 2500 direct BRINE and hold.</p> <p>ALSIF-1</p>

ATIS 133.675 251.05	POTOMAC APP CON 128.0 335.5	TOWER 118.4 349.0	GND CON 121.8 275.8	CLNC DEL 127.55 285.475	CPDLC
------------------------	--------------------------------	----------------------	------------------------	----------------------------	-------



NE-3, 22 FEB 2024 to 21 MAR 2024

NE-3, 22 FEB 2024 to 21 MAR 2024

4 NM Holding Pattern	HULVI	2500	190°	190°	BEEMR	2000	1.1 NM to RWY19L	5.2 NM	2500	BRINE	ELEV 280	TDZE 279
GP 3.00°	TCH 56											
CATEGORY	A	B	C	D	E							
LPV DA*		479/24	200	(200-½)								
LNAV/VNAV DA**		680/40	401	(400-¾)								
LNAV MDA***	680/24	401 (400-½)	680/40	401 (400-¾)								
CIRCLING****	780-1	500 (500-1)	780-1½	500 (500-1½)	840-2	560 (600-2)						

CAMP SPRINGS, MARYLAND

38°49'N - 76°52'W

JOINT BASE ANDREWS (KADW)

Amdt 1 18MAY23

RNAV (GPS) RWY 19L

