

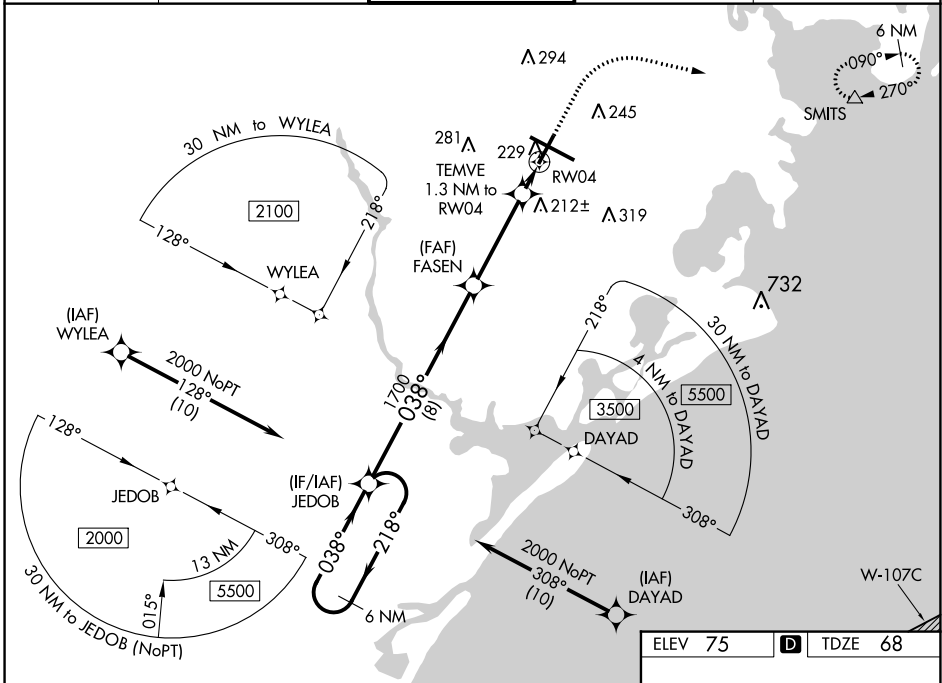
WAAS CH <b>78231</b> <b>W04A</b>	APP CRS <b>038°</b>	Rwy Idg TDZE Apt Elev	<b>6144</b> <b>68</b> <b>75</b>
--	------------------------	-----------------------------	---------------------------------------

# RNAV (GPS) RWY 4

ATLANTIC CITY INTL (ACY)

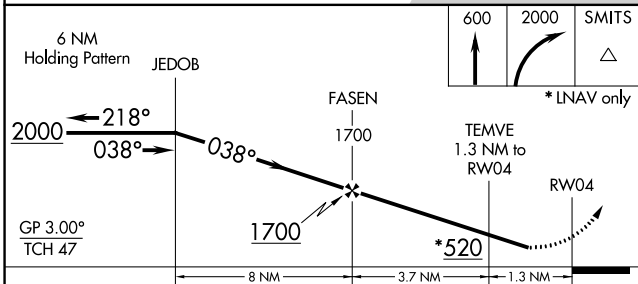
RNP APCH - GPS.		<p>▼ For uncompensated Baro-VNAV systems, LNAV/VNAV NA below -13°C (9°F) or above 54°C (130°F). Rwy 4 helicopter visibility reduction below ¾ SM NA.</p> <p>▲ ASR</p>		<p>MISSED APPROACH: Climb to 600 then climbing right turn to 2000 direct SMITS and hold.</p>	
-----------------	--	---	--	--	--

ATIS <b>125.725 316.15</b>	ATLANTIC CITY APP CON <b>124.6 327.125</b>	ATLANTIC CITY TOWER <b>120.3 239.0</b>	GND CON <b>121.9 284.6</b>	CLNC DEL <b>127.85 353.775</b>
-------------------------------	---	---	-------------------------------	-----------------------------------



NE-2, 22 FEB 2024 to 21 MAR 2024

NE-2, 22 FEB 2024 to 21 MAR 2024



ELEV 75	<b>D</b>	TDZE 68
---------	----------	---------

CATEGORY	A	B	C	D	E
LPV DA	318-1		250 (300-1)		
LNAV/VNAV DA	534-1½		466 (500-1½)		
LNAV MDA	480-1	412 (500-1)	480-1½	412 (500-1½)	
CIRCLING	540-1	600-1	620-1½	640-2	760-2½
	465 (500-1)	525 (600-1)	545 (600-1½)	565 (600-2)	685 (700-2½)

