

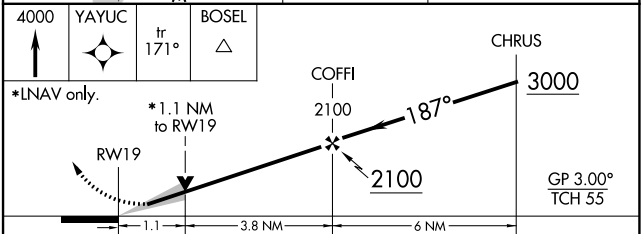
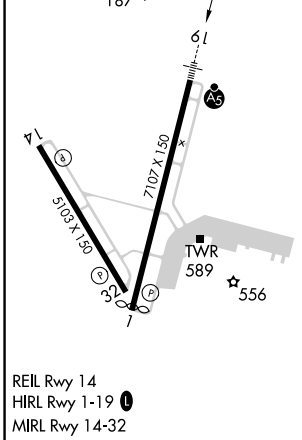
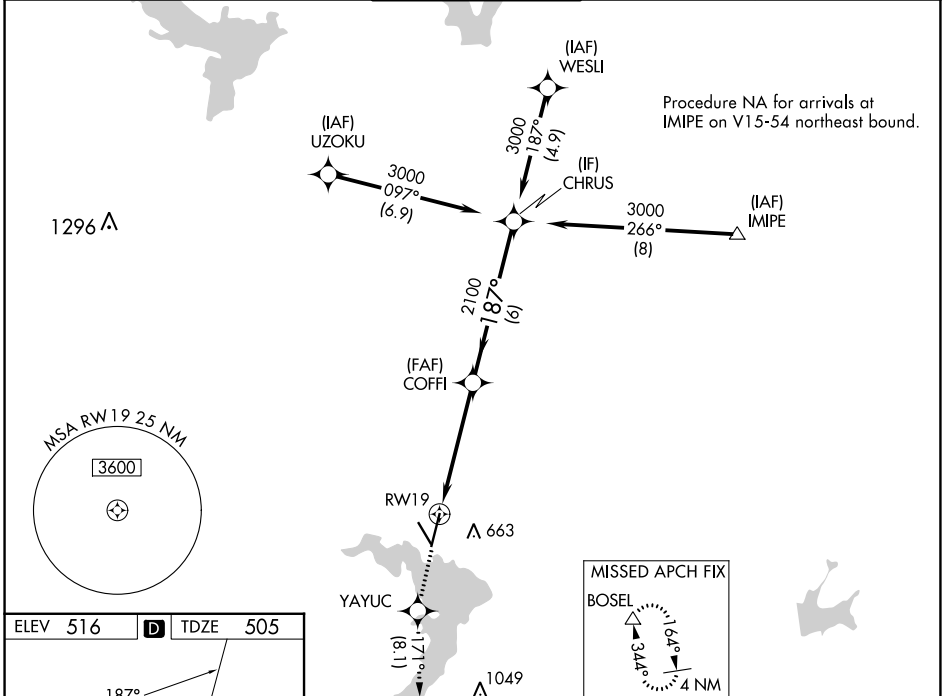
WAAS CH 82119 W19A	APP CRS 187°	Rwy Idg 6605 TDZE 505 Apt Elev 516
--	------------------------	---

RNAV (GPS) RWY 19

WACO RGNL (ACT)

RNP APCH - GPS.	MALSR 	MISSED APPROACH: Climb to 4000 direct YAYUC and on track 171° to BOSEL and hold, continue climb-in-hold to 4000.
<p>▼ For uncompensated Baro-VNAV systems, LNAV/VNAV NA below -8°C or above 54°C. For inop ALS, increase LNAV/VNAV visibility all Cats to RVR 4000.</p> <p>▲ ASR **RVR 1800 authorized with use of FD or AP or HUD to DA.</p>		

ATIS 123.85	WACO APP CON * 127.65 227.125	WACO TOWER * 119.3 (CTAF) 0 257.8	GND CON 121.9	UNICOM 122.95
-----------------------	---	---	-------------------------	-------------------------



CATEGORY	A	B	C	D
LPV DA **	705/24 200 (200-½)			
LNAV/VNAV DA	755/24 250 (300-½)			
LNAV MDA	900/24	395 (400-½)	900/35	395 (400-¾)
C CIRCLING	940-1 424 (500-1)	980-1 464 (500-1)	1020-1½ 504 (600-1½)	1160-2 644 (700-2)