

NEWBE THREE ARRIVAL  
(NEWBE, NEWBE3) 120CT17

(NEWBE, NEWBE3) 24025  
NEWBE THREE ARRIVAL

AL-659 (FAA)

NANTUCKET MEML (ACK)  
NANTUCKET, MASSACHUSETTS

BOSTON APP CON\*  
133.75 318.1  
D-ATIS  
127.5

GROTON  
110.85 GON  
Chan 45(Y)

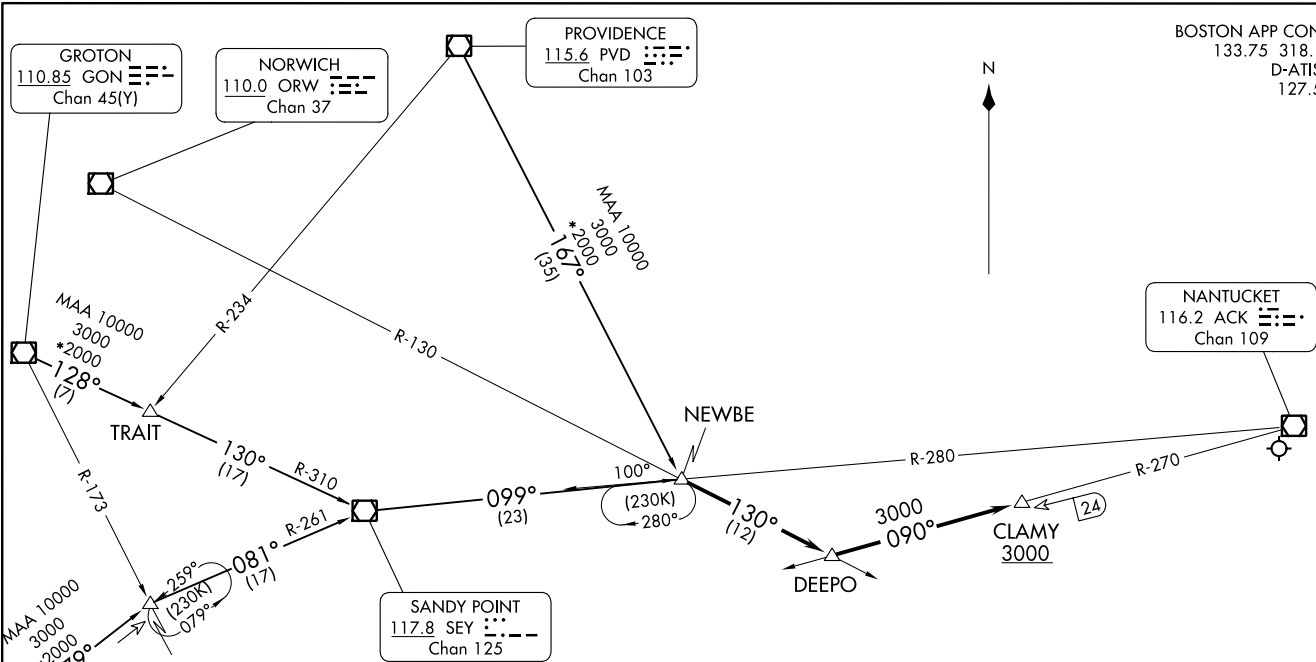
NORWICH  
110.0 ORW  
Chan 37

PROVIDENCE  
115.6 PVD  
Chan 103

NANTUCKET  
116.2 ACK  
Chan 109

SANDY POINT  
117.8 SEY  
Chan 125

HAMPTON  
113.6 HTO  
Chan 83



(NARRATIVE ON FOLLOWING PAGE)

NOTE: Chart not to scale.

NANTUCKET, MASSACHUSETTS  
NANTUCKET MEML (ACK)

## ARRIVAL DESCRIPTION

GROTON TRANSITION (GON.NEWBE3): From over GON VOR/DME on GON R-128 to TRAIT INT, then on SEY R-310 to SEY VOR/DME, then on SEY R-099 to NEWBE. Thence . . . .

HAMPTON TRANSITION (HTO.NEWBE3): From over HTO VORTAC on HTO R-079 to JORDN INT, then on SEY R-261 to SEY VOR/DME, then on SEY R-099 to NEWBE. Thence . . . .

PROVIDENCE TRANSITION (PVD.NEWBE3): From over PVD VOR/DME on PVD R-167 to NEWBE. Thence . . . .

. . . . From over NEWBE on ORW R-130 to DEEPO, then on ACK R-270 to cross CLAMY at or above 3000. After CLAMY, expect vectors to the final approach course.

NE-1, 22 FEB 2024 to 21 MAR 2024

NE-1, 22 FEB 2024 to 21 MAR 2024