

# DEEPO ONE ARRIVAL (RNAV)

NE-1, 22 FEB 2024 to 21 MAR 2024

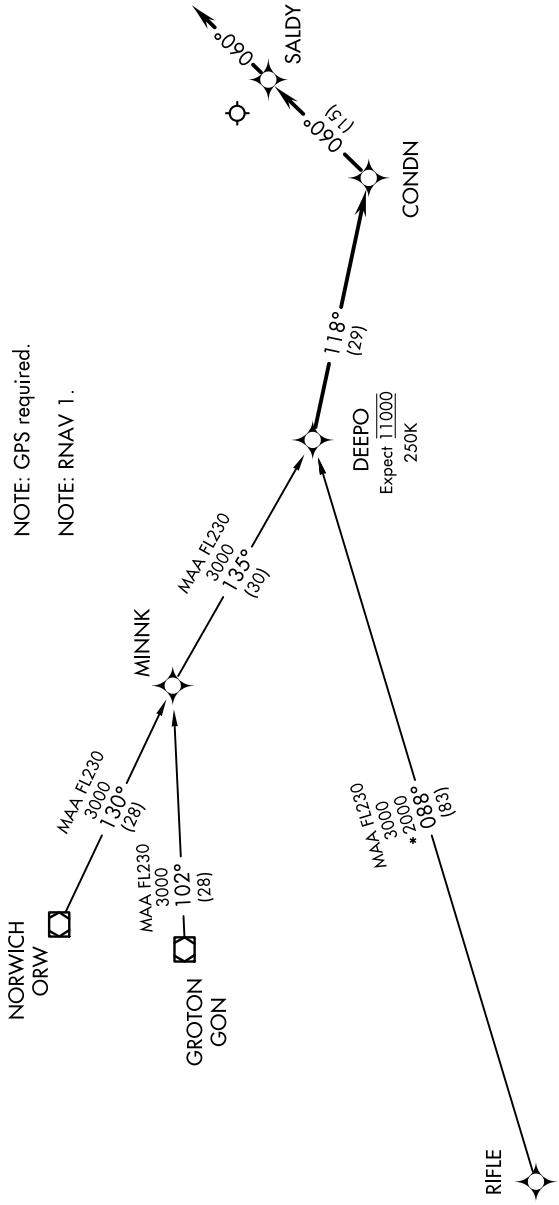
- GROTON TRANSITION (GON.DEEPO1)
- NORWICH TRANSITION (ORW.DEEPO1)
- RIFLE TRANSITION (RIFLE.DEEPO1)

BOSTON APP CON ★  
133.75 318.1  
ATIS  
127.5  
NANTUCKET TOWER ★  
118.3 (CTAF)

... From DEEPO, via 118° track to CONDN; thence via 060° track to SALDY. Depart SALDY heading 060°, expect radar vectors to final approach course.



NOTE: RADAR required.  
NOTE: GPS required.  
NOTE: RNAV 1.



NOTE: Chart not to scale.

NE-1, 22 FEB 2024 to 21 MAR 2024

# DEEPO ONE ARRIVAL (RNAV)