

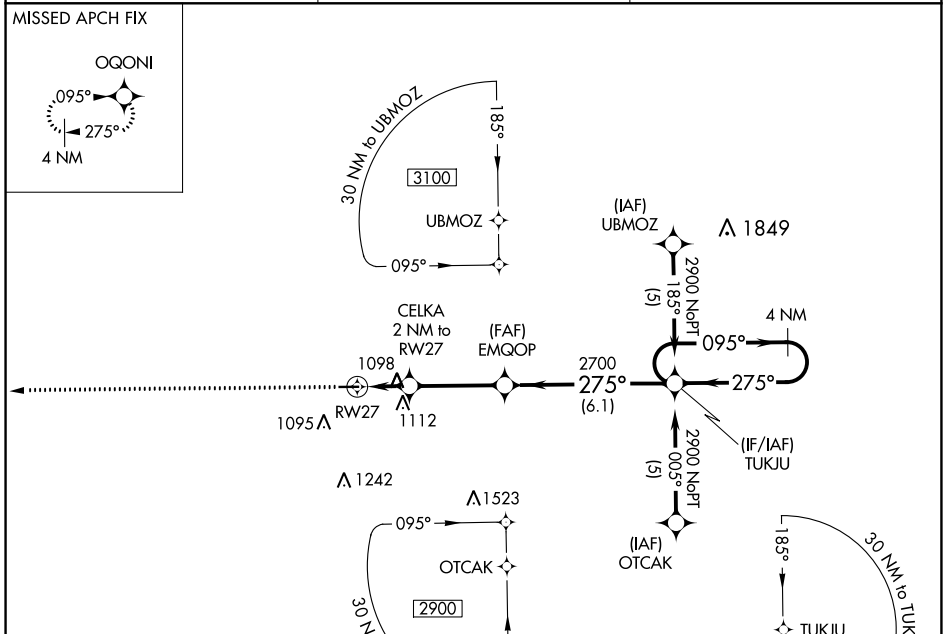
APP CRS	Rwy Idg	3199
275°	TDZE	919
	Apt Elev	920

RNAV (GPS) RWY 27

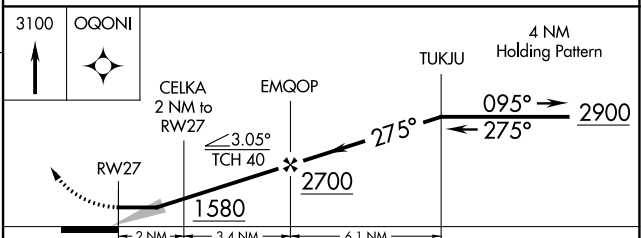
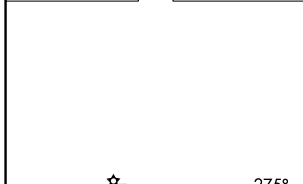
PRICES (9G2)

RNP APCH.	MISSED APPROACH: Climb to 3100 direct OQONI and hold.
<p>▼ Use Flint altimeter setting; when not received, use Howell altimeter setting.</p> <p>▲ NA Procedure NA at night. Rwy 27 helicopter visibility reduction below 1 SM NA.</p>	

FNT ASOS 133.15	GREAT LAKES APP CON ★ 128.55 257.9	UNICOM 123.0 (CTAF) 0
---------------------------	--	---------------------------------



ELEV 920	TDZE 919
----------	----------



REIL Rwy 9 0	MIRL Rwy 9-27 0
CATEGORY	A B C D
LNAV MDA	1400-1 481 (500-1) NA

EC-1, 22 FEB 2024 to 21 MAR 2024

EC-1, 22 FEB 2024 to 21 MAR 2024