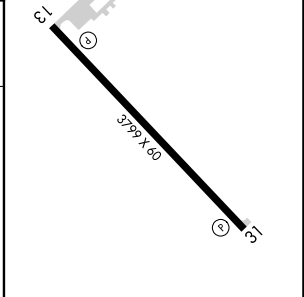
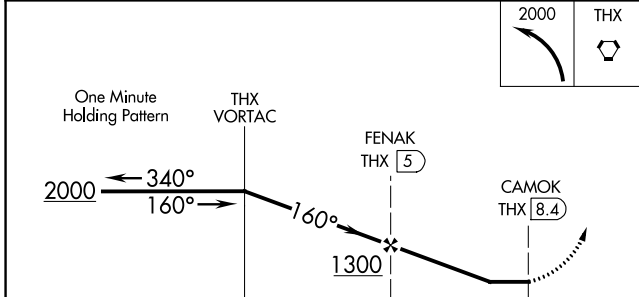
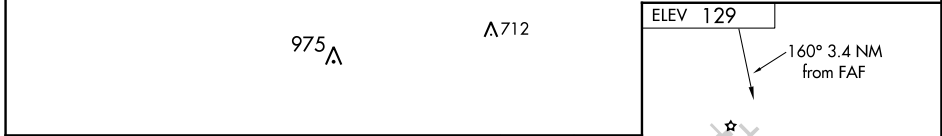
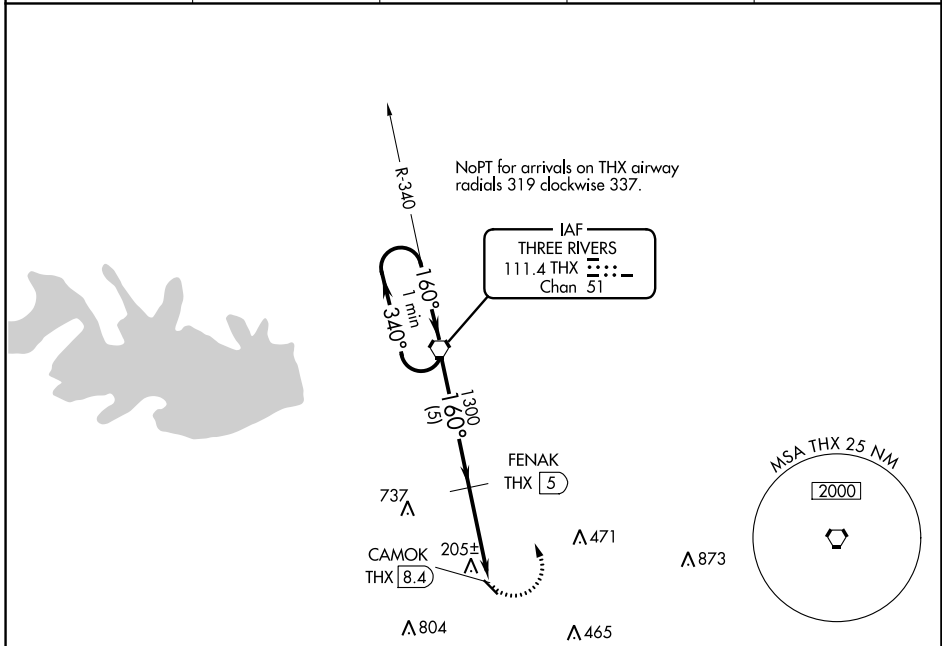


VORTAC THX <b>111.4</b> Chan <b>51</b>	APP CRS <b>160°</b>	Rwy Idg TDZE Apt Elev	<b>N/A</b> <b>N/A</b> <b>129</b>
--	------------------------	-----------------------------	--

**VOR/DME-A**  
LIVE OAK COUNTY (8T6)

**NA** Use Alice Intl altimeter setting. Circling to Rwy 31 NA at night. Visibility reduction by helicopters NA. MISSED APPROACH: Climbing left turn to 2000 direct THX VORTAC and hold.

AWOS-3PT <b>119.05</b>	ALI ASOS <b>119.225</b>	HOUSTON CENTER <b>134.6 322.5</b>	CTAF <b>122.9</b>	<b>122.7 0</b>
---------------------------	----------------------------	--------------------------------------	----------------------	----------------



CATEGORY	A	B	C	D
CIRCLING	760-1 631 (700-1)	860-1 731 (700-1)	860-2 731 (800-2)	NA

MIRL Rwy 13-31 **0**

SC-3, 22 FEB 2024 to 21 MAR 2024

SC-3, 22 FEB 2024 to 21 MAR 2024