

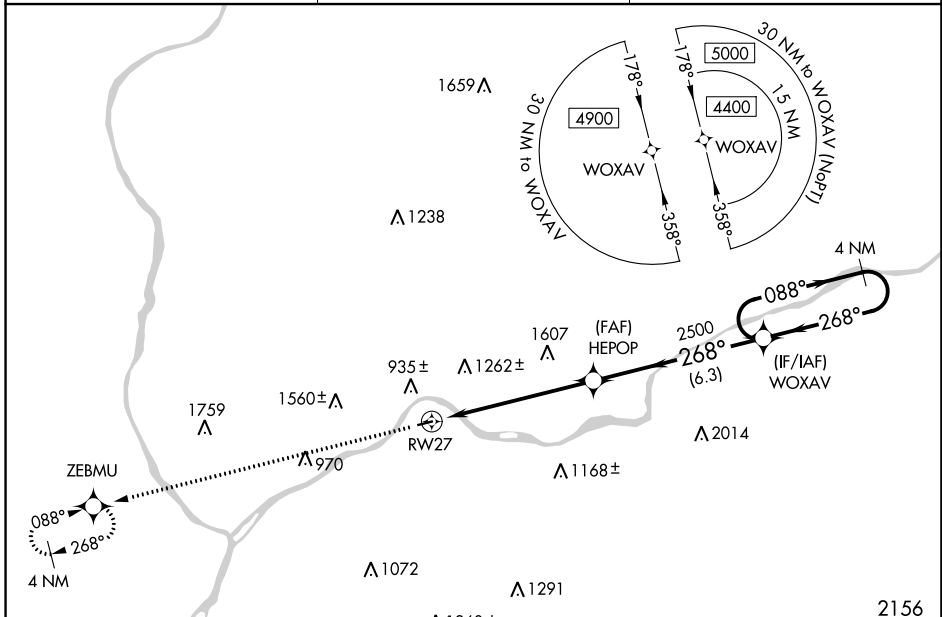
APP CRS	Rwy Idg	3000
268°	TDZE	559
	Apt Elev	559

RNAV (GPS) RWY 27

DANVILLE (8N8)

RNP APCH.	<p>▼ Use Penn Valley altimeter setting; when not received, procedure NA.</p> <p>▲ NA Procedure NA at night.</p> <p>Rwy 27 helicopter visibility reduction below 1 SM NA.</p>	MISSED APPROACH: Climb to 4400 direct ZEBMU and hold, continue climb-in-hold 4400.
-----------	--	--

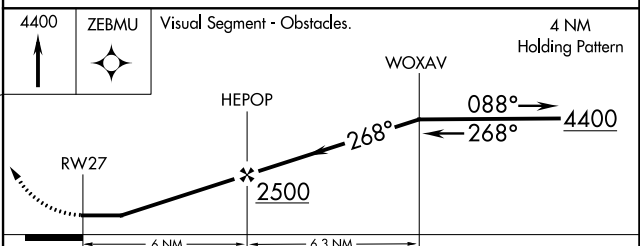
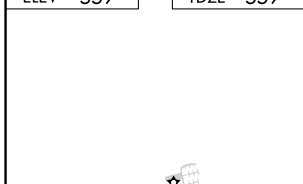
SEG ASOS 123.975	WILKES-BARRE APP CON 126.3 256.7	UNICOM 122.8 (CTAF) 0
----------------------------	--	---------------------------------



NE-4, 22 FEB 2024 to 21 MAR 2024

NE-4, 22 FEB 2024 to 21 MAR 2024

ELEV 559	TDZE 559
----------	----------



CATEGORY	A	B	C	D
LNAV MDA	1540-1¼ 981 (1000-1¼)	1540-1½ 981 (1000-1½)	NA	