

APP CRS	Rwy Idg	3506
181°	TDZE	175
	Apt Elev	175

RNAV (GPS) RWY 18

GREENSBORO MUNI (7A)

RNP APCH - GPS.

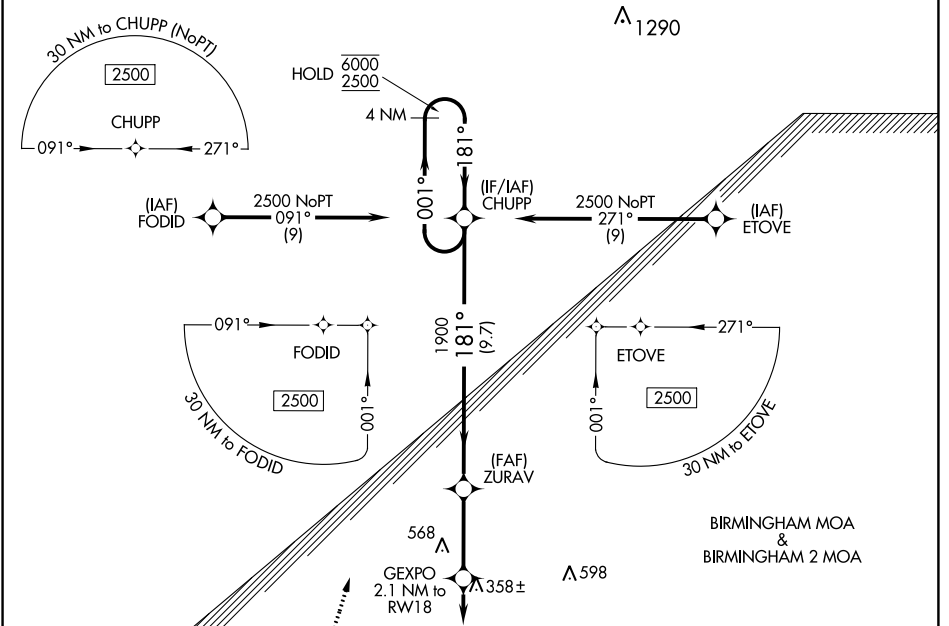
Procedure NA at night. Rwy 18 helicopter visibility reduction below 1 SM NA. Use Demopolis altimeter setting.

MISSED APPROACH: Climbing right turn to 2500 direct CHUPP and hold.

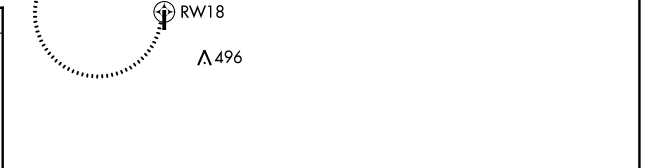
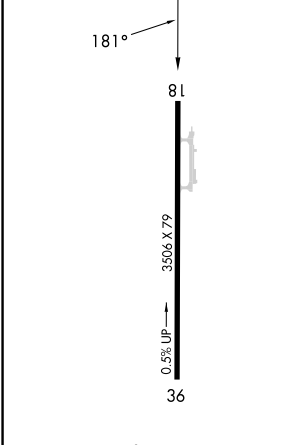
DYA AWOS-3P
119.475

ATLANTA CENTER
132.25 263.025

UNICOM
123.0 (CTAF)



ELEV 175	TDZE 175
----------	----------



2500 CHUPP	4 NM Holding Pattern			
RW18	GEXPO 2.1 NM to RW18	ZURAV	CHUPP	001° → 6000 ← 181° 2500
880	1900	1900	1900	
2.1 NM	3.2 NM	9.7 NM		

CATEGORY	A	B	C	D
LNAV MDA	680-1	505 (600-1)	680-1 ³ / ₈	505 (600-1 ³ / ₈)
CIRCLING	700-1 525 (600-1)	720-1 545 (600-1)	860-2 685 (700-2)	940-2 ¹ / ₂ 765 (800-2 ¹ / ₂)

MIRL Rwy 18-36
REIL Rws 18 and 36

SE-4, 22 FEB 2024 to 21 MAR 2024

SE-4, 22 FEB 2024 to 21 MAR 2024