

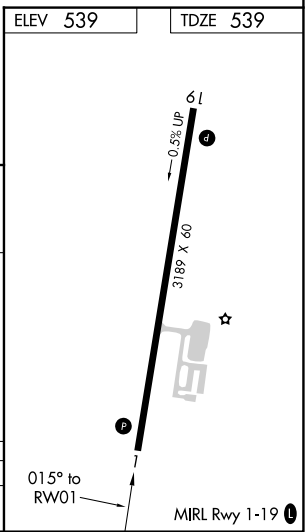
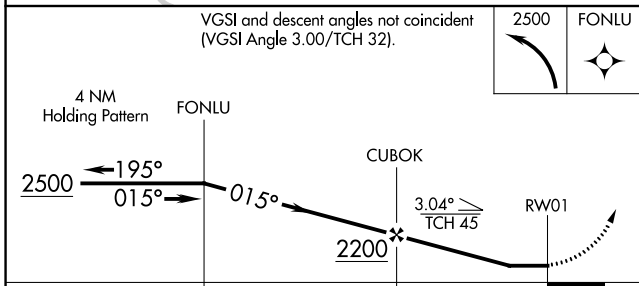
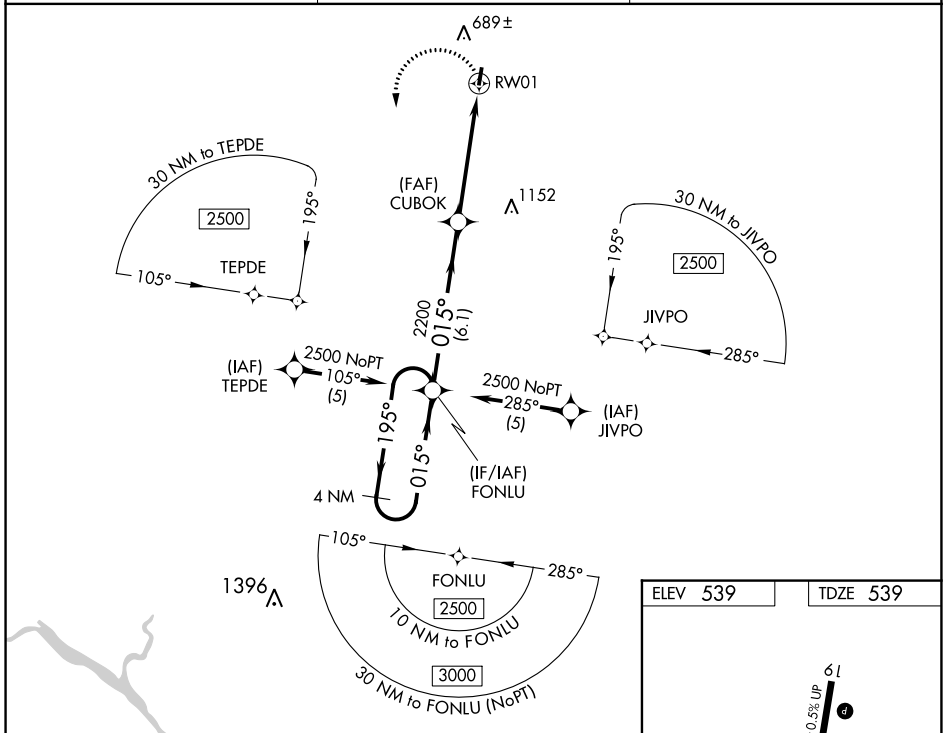
APP CRS	Rwy ldg	3189
015°	TDZE	539
	Apt Elev	539

RNAV (GPS) RWY 1

SALUDA COUNTY (6J4)

RNP APCH.		<p>MISSED APPROACH: Climbing left turn to 2500 direct FONLU and hold.</p>
<p>▽ Procedure NA at night. Rwy 1 helicopter visibility reduction below 1 SM NA. ▲ NA Use Aiken altimeter setting; when not received, use Augusta Rgnl at Bush Fld altimeter setting and increase all MDA 100 feet and increase LNAV Cat C visibility ¼ SM.</p>		

AIK AWOS-3 118.025	AUGUSTA APP CON ★ 119.15	CTAF 122.9
------------------------------	------------------------------------	----------------------



CATEGORY	A	B	C	D
LNAV MDA	1160-1	621 (700-1)	1160-1¾ 621 (700-1¾)	NA

SE-2, 22 FEB 2024 to 21 MAR 2024

SE-2, 22 FEB 2024 to 21 MAR 2024

APP CRS	Rwy ldg	3189
195°	TDZE	539
	Apt Elev	539

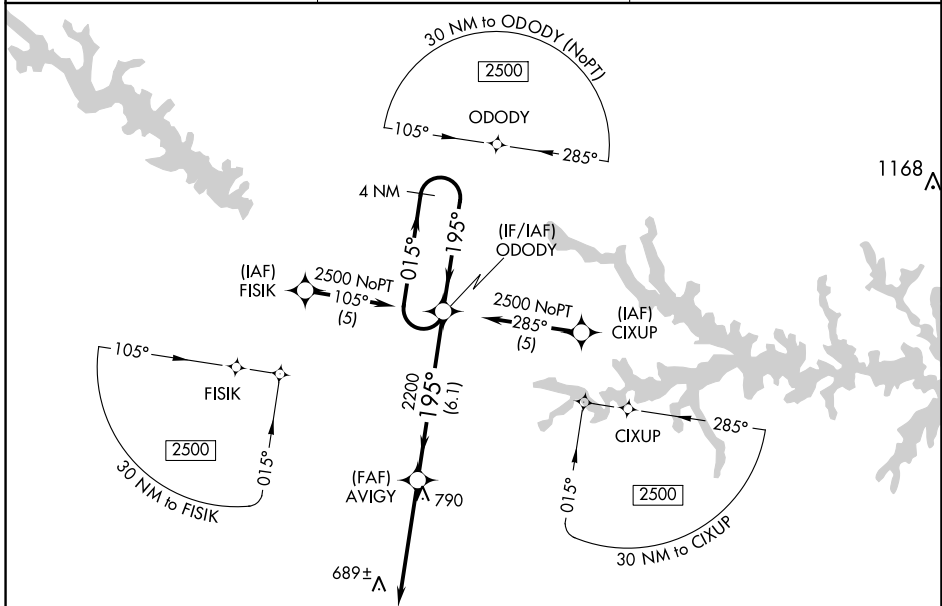
RNAV (GPS) RWY 19

SALUDA COUNTY (6J4)

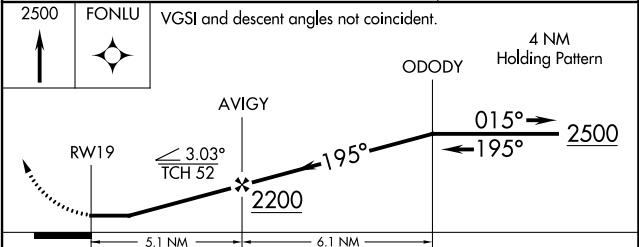
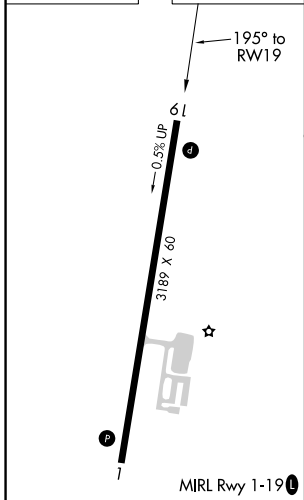
NA DME/DME RNP-0.3 NA. Procedure NA at night. Visibility reduction by helicopters NA. Use Aiken altimeter setting, when not received, use Augusta Rgnl altimeter setting and increase all MDAs 100 feet, increase LNAV Cat C visibility ¼ SM and Circling Cat C visibility ½ SM.

MISSED APPROACH: Climb to 2500 direct FONLU and hold.

AIK AWOS-3 118.025	AUGUSTA APP CON ★ 119.15	CTAF 122.9
------------------------------	------------------------------------	----------------------



ELEV 539	TDZE 539
----------	----------



CATEGORY	A	B	C	D
LNAV MDA	1060-1	521 (600-1)	1060-1½ 521 (600-1½)	NA
CIRCLING	1100-1 561 (600-1)	1160-1 621 (700-1)	1180-1¾ 641 (700-1¾)	NA

SE-2, 22 FEB 2024 to 21 MAR 2024

SE-2, 22 FEB 2024 to 21 MAR 2024