

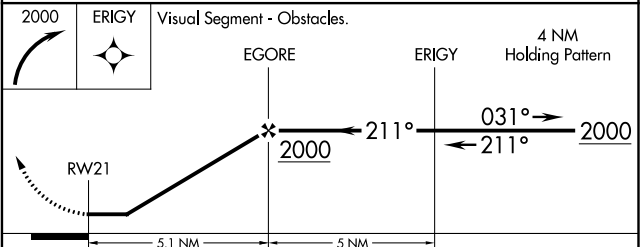
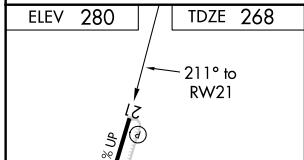
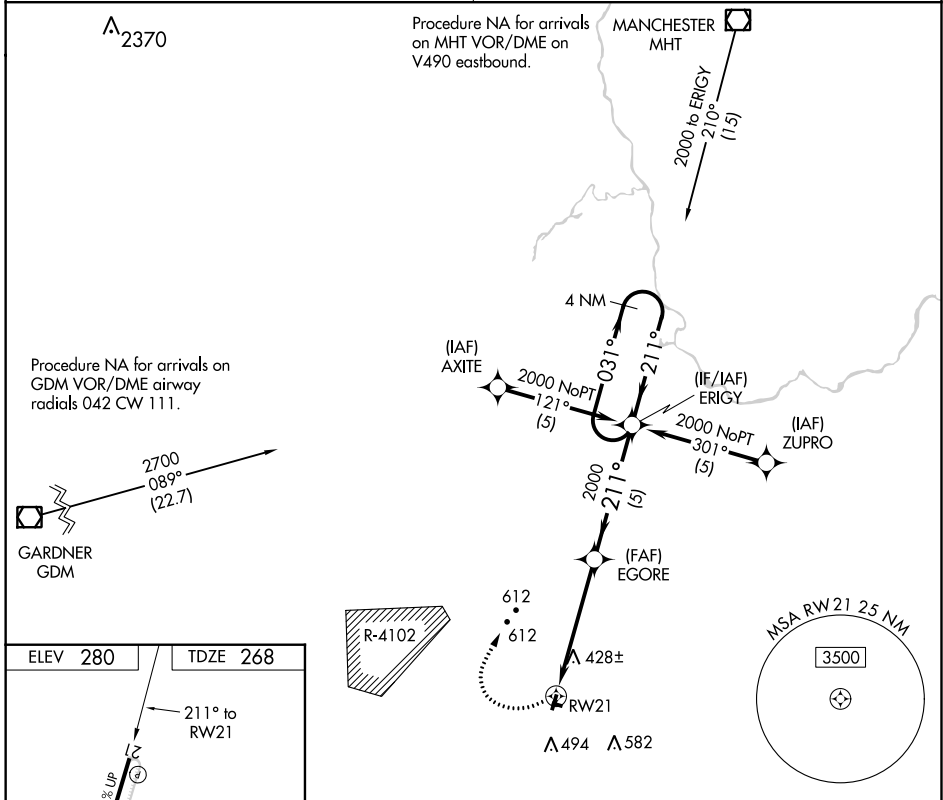
| | | |
|-------------|----------|-------------|
| APP CRS | Rwy Idg | 3110 |
| 211° | TDZE | 268 |
| | Apt Elev | 280 |

RNAV (GPS) RWY 21

MINUTE MAN AIR FLD (6B6)

| | | |
|-----------------|---|--|
| RNP APCH - GPS. | | MISSED APPROACH: Climbing right turn to 2000 direct ERIGY and hold. |
| ▼ | Use Bedford altimeter setting; when not received, use Boston altimeter setting and increase all MDAs 60 feet and visibility Cat B ¼ SM. Circling NA to Rwy 12 and 30. Rwy 21 helicopter visibility reduction below ¾ SM NA. Circling Rwy 3 NA at night. | |
| ▲ NA | | |

| | |
|--------------------------------------|-------------------------------|
| BOSTON APP CON 124.4 279.6 | UNICOM 122.8 (CTAF) |
|--------------------------------------|-------------------------------|



| | | | | |
|----------|----------------------|-----------------------|----|---|
| CATEGORY | A | B | C | D |
| LNAV MDA | 960-1 | 692 (700-1) | NA | |
| CIRCLING | 960-1 680 (700-1) | 1020-1 740 (800-1) | NA | |

NE-1, 27 JAN 2022 to 24 FEB 2022

NE-1, 27 JAN 2022 to 24 FEB 2022