

APP CRS <b>194°</b>	Rwy Idg TDZE Apt Elev	<b>N/A</b> <b>N/A</b> <b>5915</b>
------------------------	--------------------------	---

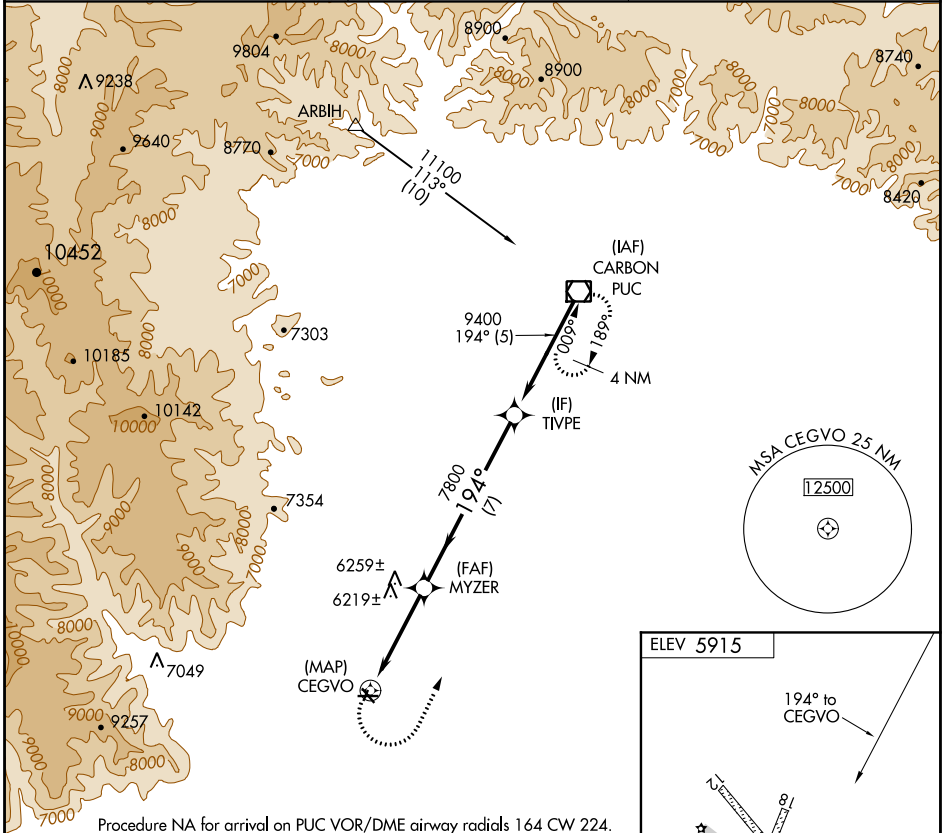
# RNAV (GPS)-C

HUNTINGTON MUNI (69V)

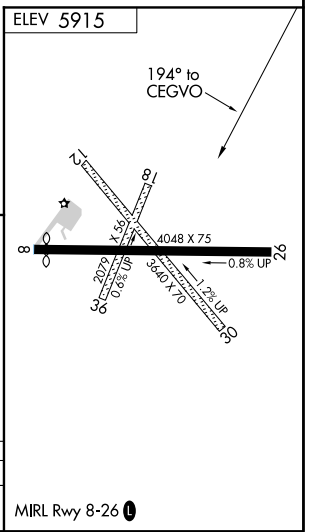
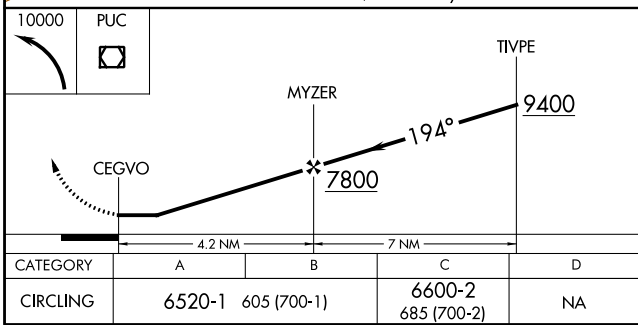
**NA** Rwy 8, 12, 26, 30 helicopter visibility reduction below 1 SM NA.  
DME/DME RNP-0.3 NA. Procedure NA at night. Use Price altimeter setting; when not received, procedure NA.

**MISSED APPROACH:** Climbing left turn to 10000 direct PUC VOR/DME and hold.

PUC ASOS <b>135.425</b>	SALT LAKE CENTER <b>133.9 370.85</b>	UNICOM <b>122.8 (CTAF)</b>
----------------------------	---	-------------------------------



Procedure NA for arrival on PUC VOR/DME airway radials 164 CW 224.



SW-4, 07 OCT 2021 to 04 NOV 2021

SW-4, 07 OCT 2021 to 04 NOV 2021

