

WAAS CH 69436 W30A	APP CRS 303°	Rwy Idg TDZE Apt Elev	3402 2677 2677
--	------------------------	-----------------------------	---

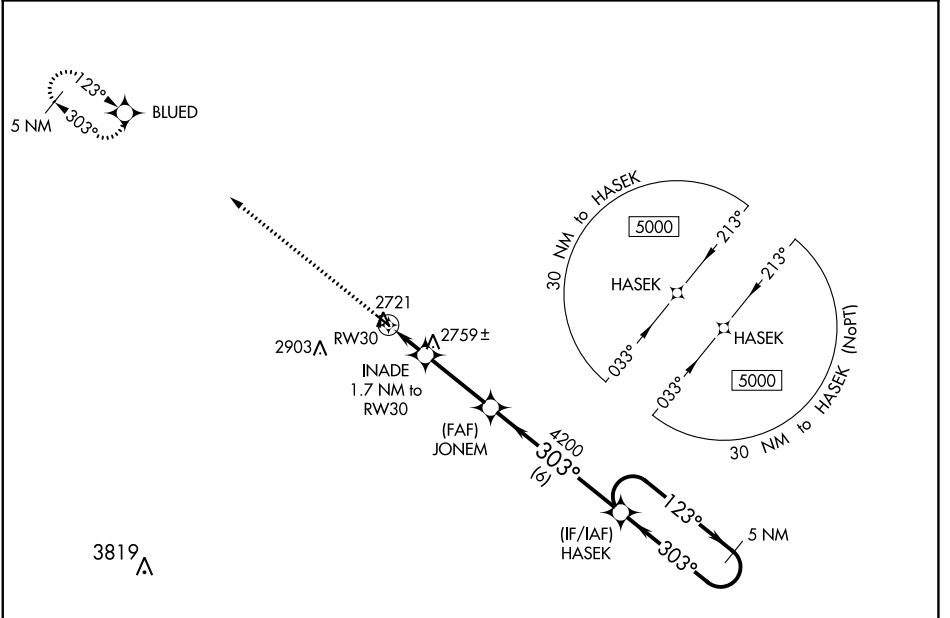
RNAV (GPS) RWY 30

CURTIS MUNI (47V)

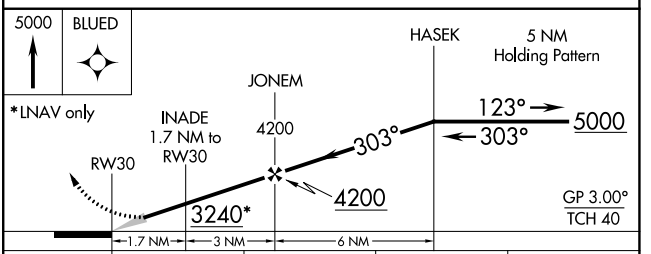
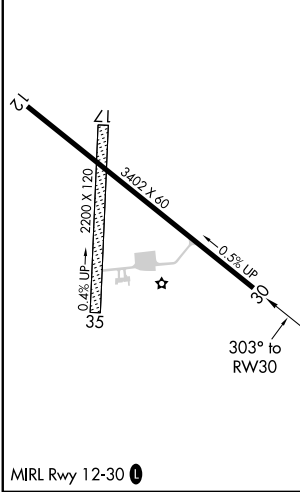
NA Baro-VNAV NA. Use Mc Cook altimeter setting; when not received, use North Platte altimeter setting and increase all DA 10 feet and all MDA 20 feet. DME/DME RNP-0.3 NA. Night landing: Rwys 17, 35 NA.

MISSED APPROACH: Climb to 5000 direct BLUED and hold.

MCK ASOS 119.025	DENVER CENTER 132.7 226.675	CTAF 122.9
----------------------------	---------------------------------------	----------------------



ELEV 2677	TDZE 2677
-----------	-----------



CATEGORY	A	B	C	D
LPV DA	3002-1½	325 (400-1½)		NA
LNAV/VNAV DA	3002-1½	325 (400-1½)		NA
LNAV MDA	3100-1	423 (500-1)		NA
CIRCLING	3200-1 523 (600-1)	3380-1 703 (800-1)		NA

NC-2, 22 FEB 2024 to 21 MAR 2024

NC-2, 22 FEB 2024 to 21 MAR 2024