

(GABOO.GABOO1) 22027

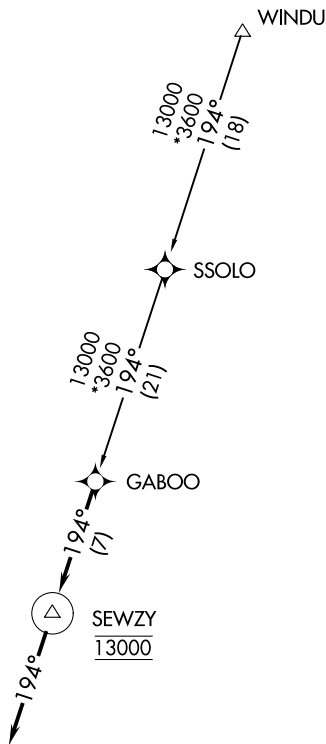
# GABOO ONE ARRIVAL (RNAV)

AL-502 (FAA)

AUSTIN, TEXAS

AUSTIN APP CON  
127.225 317.65  
HYI ATIS ★  
120.825  
T74 AWOS-3PT  
119.75

- NOTE: RADAR required.
- NOTE: RNAV 1.
- NOTE: DME/DME/IRU or GPS required.
- NOTE: Turbojet and turboprop aircraft only.



NOTE: Chart not to scale.

## ARRIVAL ROUTE DESCRIPTION

SSOLO TRANSITION (SSOLO.GABOO1)

WINDU TRANSITION (WINDU.GABOO1)

LANDING ALL AIRPORTS: From GABOO on track 194° to cross SEWZY at 13000, then on track 194°. Expect RADAR vectors to final approach course.

# GABOO ONE ARRIVAL (RNAV)

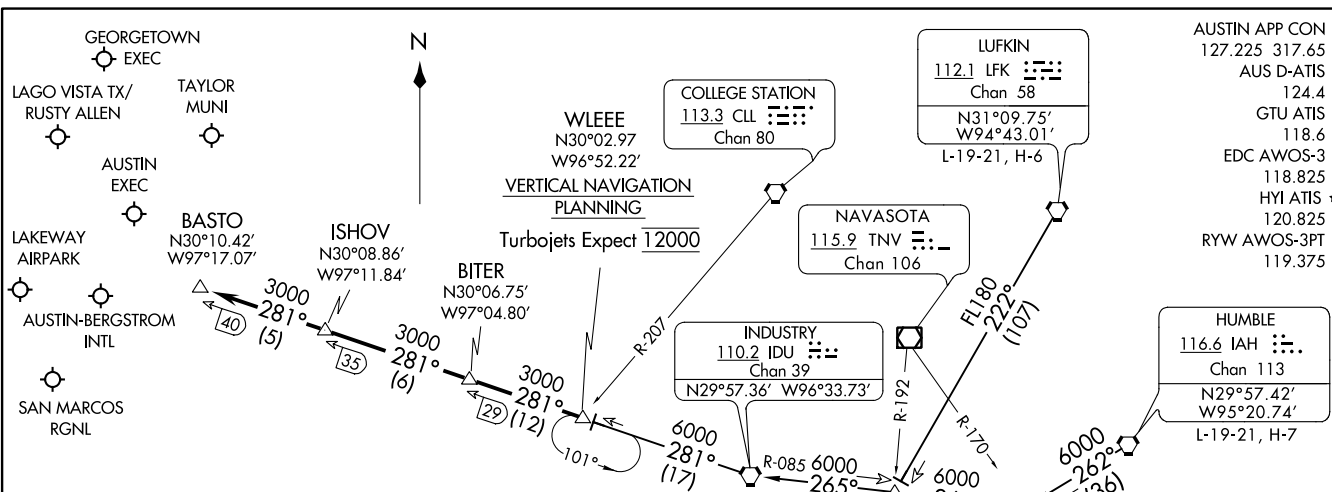
(GABOO.GABOO1) 16JUL20

AUSTIN, TEXAS

SC-3, 22 FEB 2024 to 21 MAR 2024

SC-3, 22 FEB 2024 to 21 MAR 2024

BITER NINE ARRIVAL  
(WLEEE.BITER9) 25APR19



AUSTIN APP CON  
127.225 317.65  
AUS D-ATIS  
124.4  
GTU ATIS  
118.6  
EDC AWOS-3  
118.825  
HYI ATIS \*  
120.825  
RYW AWOS-3PT  
119.375

(WLEEE.BITER9) 22195  
BITER NINE ARRIVAL

AL-556 (FAA)

AUSTIN, TEXAS

ARRIVAL ROUTE DESCRIPTION

**HUMBLE TRANSITION (IAH.BITER9):** From over IAH VORTAC on IAH R-262 to SHYNR INT, then on IDU R-085 to IDU VORTAC, then on IDU R-281 to WLEEE INT. Thence . . . .

**INDUSTRY TRANSITION (IDU.BITER9):** From over IDU VORTAC on IDU R-281 to WLEEE INT. Thence . . . .

**LUFKIN TRANSITION (LFK.BITER9):** From over LFK VORTAC on LFK R-222 to BOCCK INT, then on IDU R-085 to IDU VORTAC, then on IDU R-281 to WLEEE INT. Thence . . . .

. . . . From over WLEEE on IDU R-281 to BITER, then on IDU R-281 to ISHOV, then on IDU R-281 to BASTO. Expect vectors to final approach course at or prior to BASTO.

NOTE: RADAR required.  
NOTE: DME required.  
NOTE: DME/DME/IRU or GPS equipped aircraft must file the WLEEE (RNAV) or POTRR (RNAV) STAR.

NOTE: Chart not to scale.

AUSTIN, TEXAS

# BLEWE FIVE ARRIVAL

AUSTIN APP CON  
127.225 317.65  
AUS D-ATIS  
124.4  
EDC AWOS-3  
118.825  
HYI ATIS \*  
120.825  
RYW AWOS-3PT  
119.375

WACO  
115.3 ACT   
Chan 100  
N31°39.73'-W97°16.14'  
L-19, H-6

MAVERICK  
113.1 TTT   
Chan 78

GOOCH SPRINGS  
112.5 AGJ   
Chan 72

WINDU  
N31°31.83'  
W97°04.95'  
H-6

BLEWE  
N31°12.46'  
W97°12.54'

SEWZY  
N30°48.80'  
W97°21.74'  
VERTICAL NAVIGATION  
PLANNING  
Expect 13000

CENTEX  
112.8 CWK   
Chan 75  
N30°22.71'-W97°31.79'

LAGO VISTA TX/  
RUSTY ALLEN

LAKEWAY  
AIRPARK

AUSTIN-BERGSTROM  
INTL

SAN MARCOS RGNL

NOTE: RADAR required.  
NOTE: DME required.

NOTE: Chart not to scale.

## ARRIVAL ROUTE DESCRIPTION

WACO TRANSITION (ACT.BLEWE5): From over ACT VORTAC on ACT R-165 to BLEWE. Thence . . .

WINDU TRANSITION (WINDU.BLEWE5): From over WINDU on CWK R-012 to BLEWE. Thence . . .

. . . From over BLEWE on CWK R-012 to SEWZY, then on CWK R-012 to CWK VORTAC. Expect vectors to final approach course at or prior to CWK VORTAC.

SC-3, 22 FEB 2024 to 21 MAR 2024

SC-3, 22 FEB 2024 to 21 MAR 2024

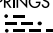
(KALLA.KALLA4) 22195

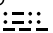
AL-556 (FAA)

# KALLA FOUR ARRIVAL

AUSTIN, TEXAS

AUSTIN APP CON  
119.0 370.85  
AUS D-ATIS  
124.4  
GTU ATIS  
118.6

GOOCH SPRINGS  
112.5 AGJ   
Chan 72

LLANO  
108.2 LLO   
Chan 19  
N30°47.78'-W98°47.24'  
L-19, H-6


4100  
089°  
(37)

KALLA  
N30°43.26'  
W98°04.64'  
10000

GEORGETOWN  
EXEC 

120°  
(35)

LAKEWAY  
AIRPARK 

Ldg KAUS, KGTU, K3R9  
CENTEX  
112.8 CWK   
Chan 75  
N30°22.71'-W97°31.79'

10000

AUSTIN-BERGSTROM INTL 

NOTE: RADAR required.

NOTE: DME/DME/IRU or GPS equipped turbojet  
and turboprop aircraft landing KAUS must  
file the LAIKS (RNAV) STAR.

NOTE: Chart not to scale.

## ARRIVAL ROUTE DESCRIPTION

LLANO TRANSITION (LLO.KALLA4): From over LLO VORTAC on LLO R-089  
to KALLA. Thence . . . .

. . . . from over KALLA on CWK R-300 to cross CWK VORTAC at 10000.  
Expect vectors to final approach course.

KALLA FOUR ARRIVAL  
(KALLA.KALLA4) 15AUG19

AUSTIN, TEXAS

SC-3, 22 FEB 2024 to 21 MAR 2024

SC-3, 22 FEB 2024 to 21 MAR 2024

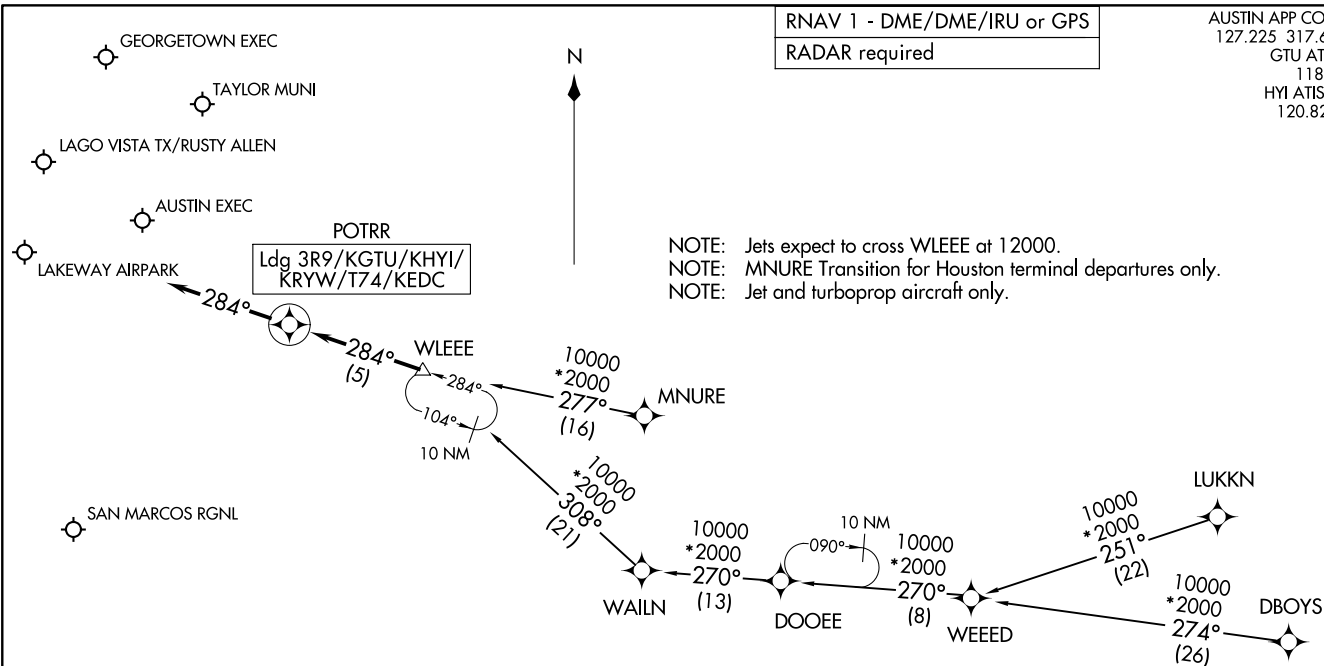
POTRR TWO ARRIVAL (RNAV)  
(WLEEE.POTRR2) 14JUL22

(WLEEE.POTRR2) 22195  
POTRR TWO ARRIVAL (RNAV)

AUSTIN APP CON  
127.225 317.65  
GTU ATIS  
118.6  
HYI ATIS ★  
120.825

RNAV 1 - DME/DME/IRU or GPS  
RADAR required

NOTE: Jets expect to cross WLEEE at 12000.  
NOTE: MNURE Transition for Houston terminal departures only.  
NOTE: Jet and turboprop aircraft only.



NOTE: Chart not to scale.

ARRIVAL ROUTE DESCRIPTION

- DBOYS TRANSITION (DBOYS.POTRR2)
- LUKKN TRANSITION (LUKKN.POTRR2)
- MNURE TRANSITION (MNURE.POTRR2)
- WEEED TRANSITION (WEEED.POTRR2)

LANDING ALL AIRPORTS: From WLEEE on track 284° to POTRR, then on track 284°. Expect RADAR vectors to final approach course.

AUSTIN, TEXAS

AUSTIN, TEXAS

AL-5891 (FAA)