

WAAS CH 57917 W01A	APP CRS 008°	Rwy Idg 5000 TDZE 969 Apt Elev 969
--	------------------------	---

RNAV (GPS) RWY 1

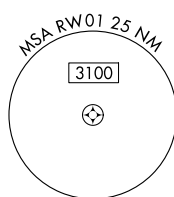
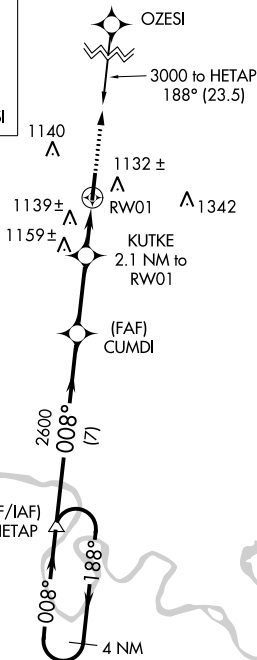
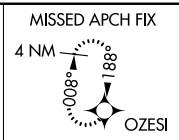
LAFAYETTE MUNI (3M7)

⚠ NA For uncompensated Baro-VNAV systems, LNAV/VNAV NA below -16°C (4°F) or above 47°C (116°F). DME/DME RNP-0.3 NA. Visibility reduction by helicopters NA. Obtain local altimeter setting on CTAF; when not received, use Bowling Green altimeter setting and increase all DA 133 feet and all MDA 140 feet, increase LPV and LNAV/VNAV all Cats visibility ½ mile, LNAV Cat C and D visibility ¼ mile and Circling Cat C/D visibility ¼ mile. VDP and Baro-VNAV NA when using Bowling Green altimeter setting.

MISSED APPROACH:
Climb to 3000 direct OZESI and hold.

NASHVILLE APP CON
118.4 360.7

UNICOM
122.8 (CTAF)

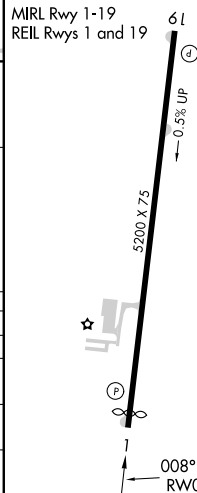
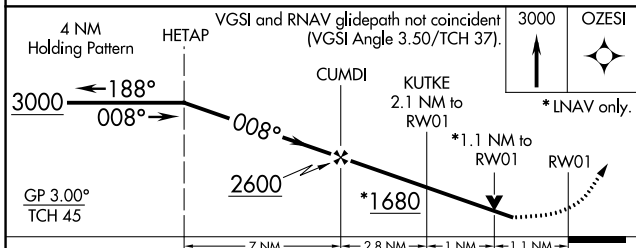


SE-1, 11 AUG 2022 to 08 SEP 2022

SE-1, 11 AUG 2022 to 08 SEP 2022

ELEV 969 **D** TDZE 969

MIRL Rwy 1-19
REIL Rwys 1 and 19



CATEGORY	A	B	C	D
LPV DA		1318-1¼	349 (400-1¼)	
LNAV/VNAV DA		1452-1¾	483 (500-1¾)	
LNAV MDA	1400-1	431 (500-1)	1400-1¼ 431 (500-1¼)	1400-1½ 431 (500-1½)
CIRCLING	1440-1	471 (500-1)	1440-1½ 471 (500-1½)	1520-2 551 (600-2)

WAAS CH 61316 W19A	APP CRS 188°	Rwy Idg TDZE Apt Elev	5000 961 969
--	------------------------	-----------------------------	---

RNAV (GPS) RWY 19

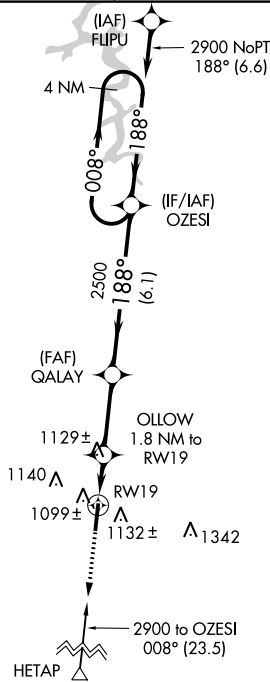
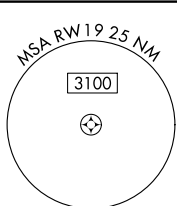
LAFAYETTE MUNI (3M7)

NA For uncompensated Baro-VNAV systems, LNAV/VNAV NA below -1.6°C (4°F) or above 46°C (114°F). DME/DME RNP-0.3 NA. Visibility reduction by helicopters NA. Obtain local altimeter setting on CTAF; when not received, use Bowling Green altimeter setting and increase all DA 133 feet and all MDA 140 feet, increase LPV and LNAV/VNAV all Cats visibility ½ mile, LNAV Cat C visibility ¼ mile, Cat D visibility ½ mile and Circling Cat C/D visibility ¼ mile.

MISSED APPROACH:
Climb to 3000 direct HETAP and hold.

NASHVILLE APP CON
118.4 360.7

UNICOM
122.8 (CTAF)

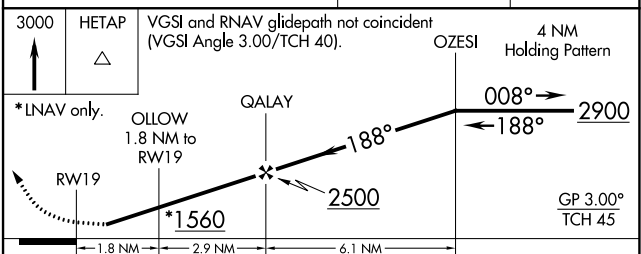
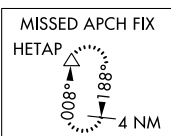


1430

ELEV 969	D	TDZE 961
----------	----------	----------



MIRL Rwy 1-19
REIL Rwws 1 and 19



CATEGORY	A	B	C	D
LPV DA	1211-1		250 (300-1)	
LNAV/VNAV DA	1369-1½		408 (400-1½)	
LNAV MDA	1380-1	419 (500-1)	1380-1¼	419 (500-1¼)
CIRCLING	1440-1	471 (500-1)	1440-1½	1520-2 551 (600-2)

SE-1, 11 AUG 2022 to 08 SEP 2022

SE-1, 11 AUG 2022 to 08 SEP 2022