

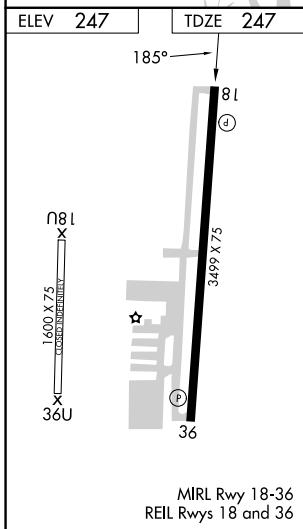
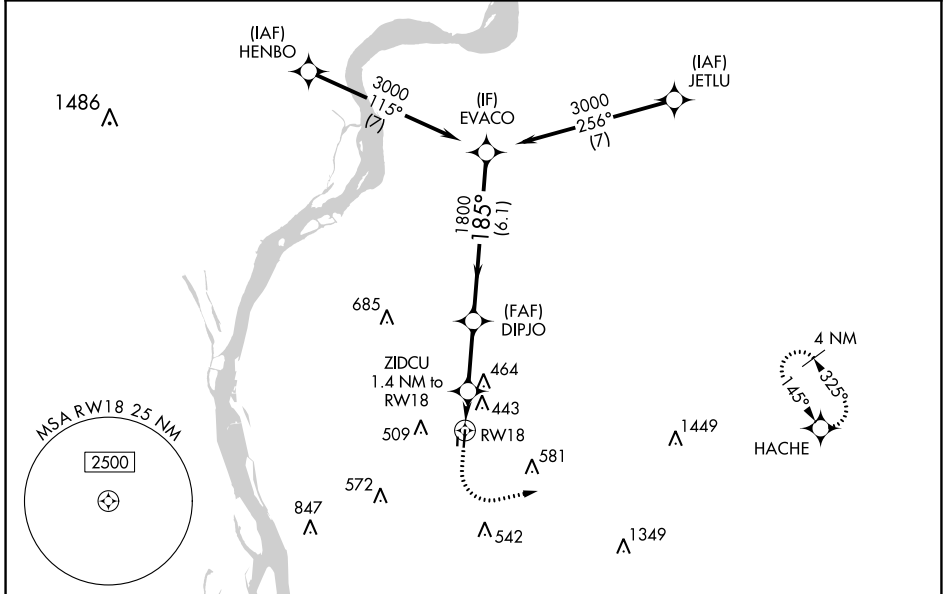
APP CRS	Rwy Idg	3499
185°	TDZE	247
	Apt Elev	247

RNAV (GPS) RWY 18

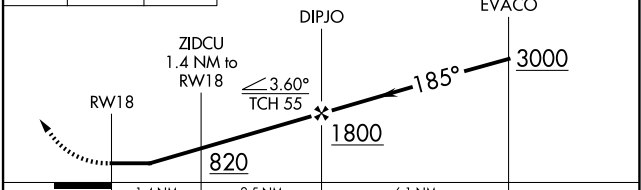
CHARLES W BAKER (2M8)

RNP APCH - GPS.		MISSED APPROACH: Climb to 1200 then climbing left turn to 3000 direct HACHE and hold.
▼	Rwy 18 helicopter visibility reduction below 1 SM NA. When local altimeter setting not received, use Millington/Memphis altimeter setting and increase all MDA 40 feet; and LNAV Cat C visibility 1/8 SM and Circling Cat C visibility 1/4 SM. Straight-in Rwy 18 NA at night, Circling Rwy 18 NA at night.	

AWOS-3PT 119.575	MEMPHIS APP CON 125.8 338.3	UNICOM 122.8 (CTAF)
----------------------------	---------------------------------------	-------------------------------



1200	3000	HACHE	VGSI and RNAV glidepath not coincident (VGSI Angle 4.00/TCH 40).
↑	↩	✦	



	1.4 NM	2.5 NM	6.1 NM	
CATEGORY	A	B	C	D
LNAV MDA	780-1	533 (600-1)	780-1½ 533 (600-1½)	NA
<input checked="" type="checkbox"/> CIRCLING	780-1 533 (600-1)	860-1 613 (700-1)	900-1¾ 653 (700-1¾)	NA

SE-1, 22 FEB 2024 to 21 MAR 2024

SE-1, 22 FEB 2024 to 21 MAR 2024

WAAS CH 93924 W36A	APP CRS 005°	Rwy Idg 3499 TDZE 246 Apt Elev 247
--	------------------------	---

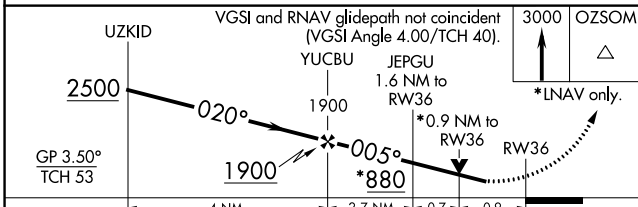
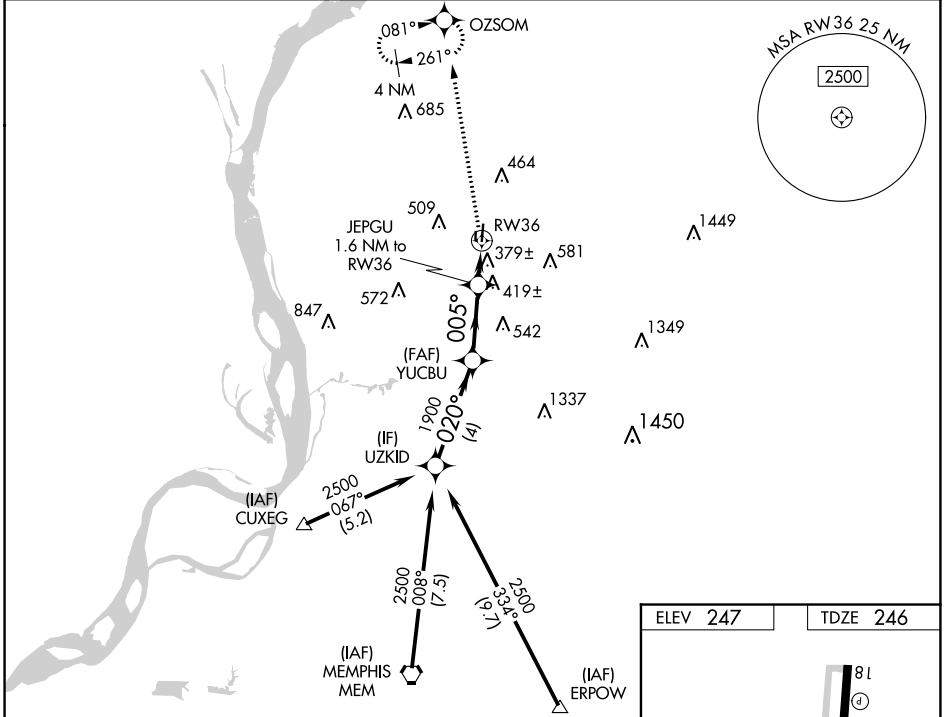
RNAV (GPS) RWY 36

CHARLES W BAKER (2M8)

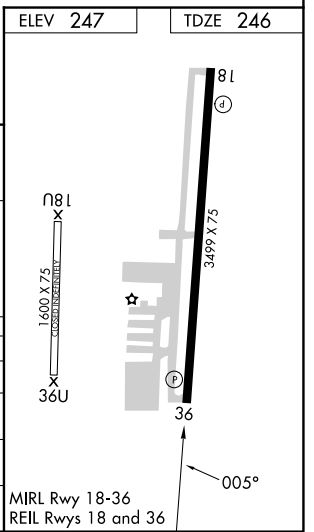
⚠ NA For uncomputerized Baro-VNAV systems, LNAV/VNAV NA below -15°C (5°F) or above 42°C (107°F). DME/DME RNP-0.3 NA. When local altimeter setting not received, use Millington/Memphis altimeter setting and increase LPV DA to 610 feet; increase LNAV/VNAV DA to 713 feet; increase all MDAs 40 feet and LNAV Cat C visibility 1/8 SM and Circling Cat C visibility 1/4 SM. Rwy 36 helicopter visibility reduction below 3/4 SM NA. Baro-VNAV and VDP NA when using Millington/Memphis altimeter setting. Circling Rwy 18 NA at night.

MISSED APPROACH: Climb to 3000 direct OZSOM and hold, continue climb-in-hold to 3000.

AWOS-3PT 119.575	MEMPHIS APP CON 125.8 338.3	UNICOM 122.8 (CTAF)
----------------------------	---------------------------------------	-------------------------------



CATEGORY	A	B	C	D
LPV DA	586-1	340 (400-1)		NA
LNAV/VNAV DA	689-1 ³ / ₈	443 (500-1 ³ / ₈)		NA
LNAV MDA	680-1	434 (500-1)	680-1 ¹ / ₄ 434 (500-1 ¹ / ₄)	NA
CIRCLING	760-1 513 (600-1)	860-1 613 (700-1)	900-1 ³ / ₄ 653 (700-1 ³ / ₄)	NA



SE-1, 22 FEB 2024 to 21 MAR 2024

SE-1, 22 FEB 2024 to 21 MAR 2024