

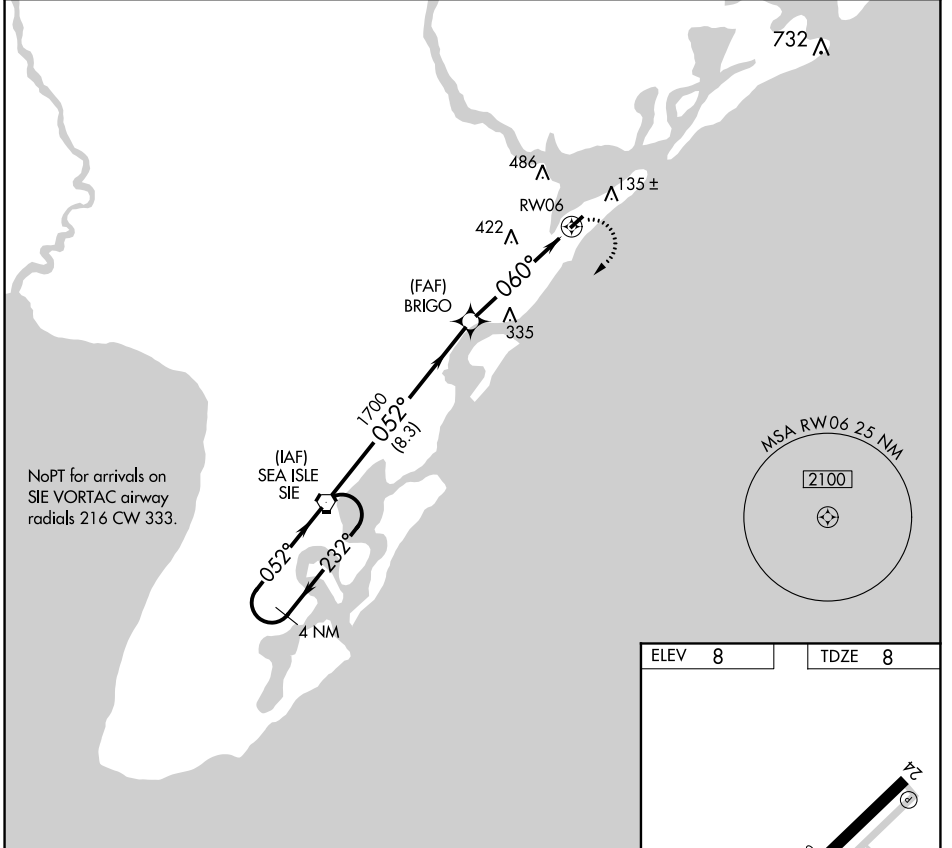
APP CRS	Rwy Idg	2972
060°	TDZE	8
	Apt Elev	8

GPS RWY 6

OCEAN CITY MUNI (26N)

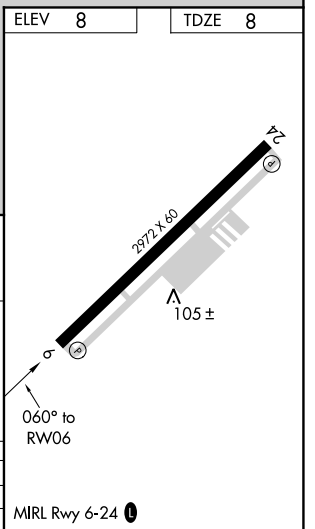
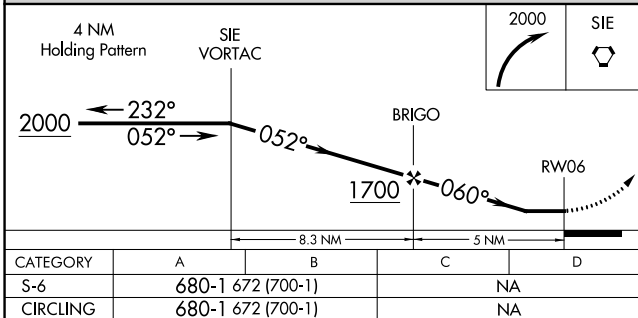
⚠ NA	When local altimeter setting not received, use Atlantic City altimeter setting.	MISSED APPROACH: Climbing right turn to 2000 direct SIE VORTAC and hold.	
-------------	---	--	--

AWOS-AV 119.775	ATLANTIC CITY APP CON 124.6 327.125	CLNC DEL 133.6	UNICOM 122.7 (CTAF) 0
---------------------------	---	--------------------------	---------------------------------



NE-2, 09 SEP 2021 to 07 OCT 2021

NE-2, 09 SEP 2021 to 07 OCT 2021



CATEGORY	A	B	C	D
S-6	680-1 672 (700-1)			NA
CIRCLING	680-1 672 (700-1)			NA