

WAAS CH 82124 W01A	APP CRS 013°	Rwy Idg 5000 TDZE 817 Apt Elev 817
--	------------------------	---

RNAV (GPS) RWY 1

PORTLAND MUNI (1M5)

RNP APCH.

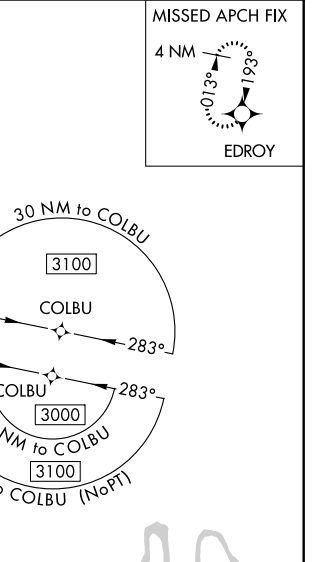
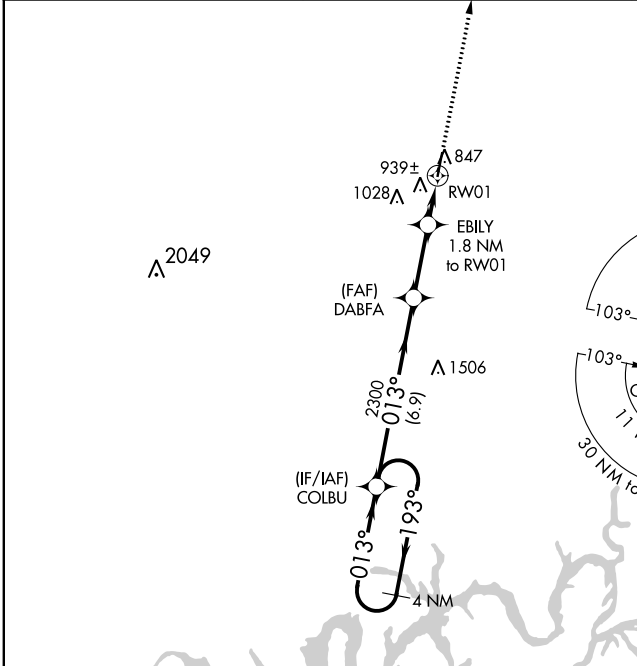
⚠ Baro-VNAV NA when using Bowling Green altimeter setting. For uncompensated Baro-VNAV systems, LNAV/VNAV NA below -16°C or above 54°C. Rwy 1 helicopter visibility reduction below 3/4 SM NA. When local altimeter setting not received, use Bowling Green altimeter setting and increase LPV DA to 1180 and all visibilities 1/8 mile; increase all LNAV/VNAV DA to 1210 and all visibilities 1/4 mile; increase all MDA 100 feet and increase LNAV Cats C/D visibility 1/4 mile.

MISSED APPROACH: Climb to 3000 direct EDROY and hold.

AWOS-3
118.175

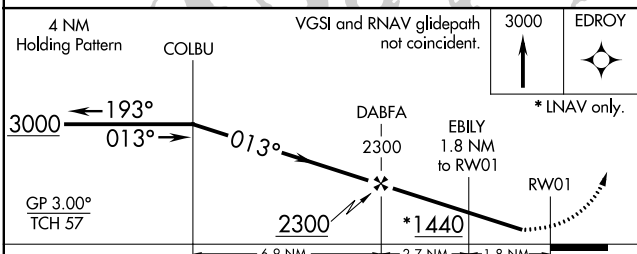
NASHVILLE APP CON
119.35 372.0

UNICOM
122.8 (CTAF) 0



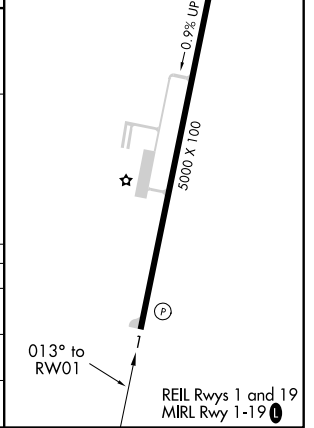
SE-1, 19 MAY 2022 to 16 JUN 2022

SE-1, 19 MAY 2022 to 16 JUN 2022



ELEV 817	TDZE 817
----------	----------

CATEGORY	A	B	C	D
LPV DA	1090-1		273 (300-1)	
LNAV/VNAV DA	1120-1		303 (400-1)	
LNAV MDA	1200-1 383 (400-1)		1200-1 1/8 383 (400-1 1/8)	



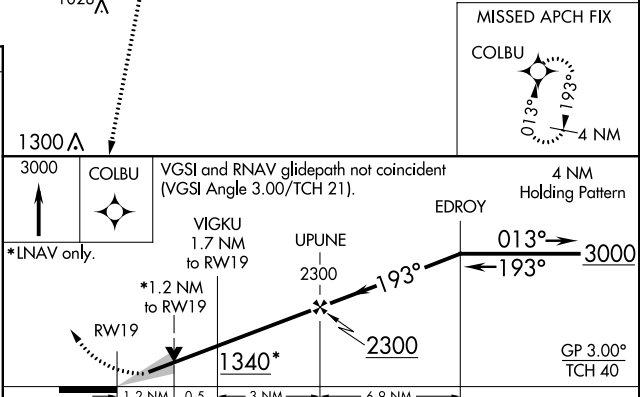
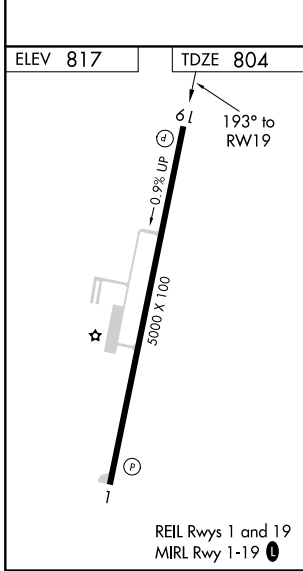
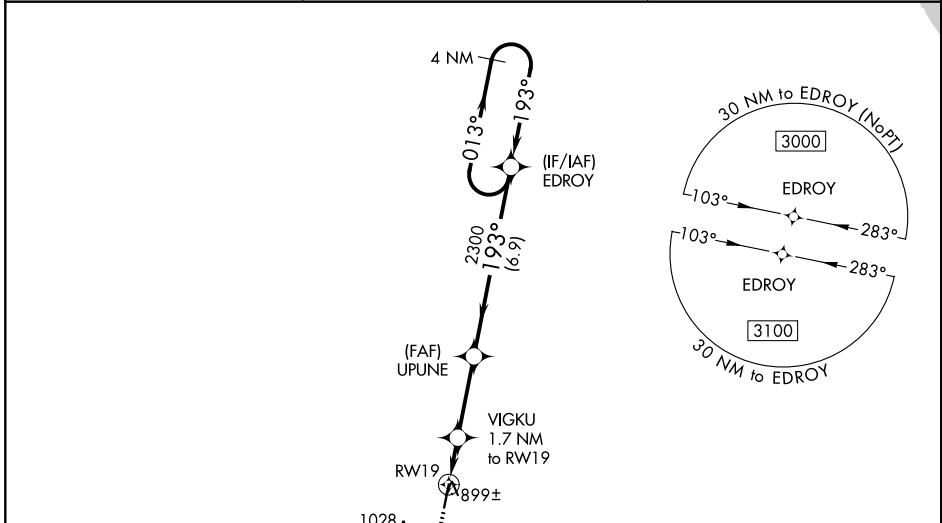
WAAS CH 40324 W19A	APP CRS 193°	Rwy Idg TDZE Apt Elev	5000 804 817
--	------------------------	-----------------------------	---

RNAV (GPS) RWY 19

PORTLAND MUNI (1M5)

RNP APCH.	<p>▽ For uncompensated Baro-VNAV systems, LNAV/VNAV NA below -16°C or above 54°C. Baro-VNAV and VDP NA when using Bowling Green altimeter setting. When local altimeter setting not received, use Bowling Green altimeter setting and increase LPV DA to 1144 and all visibilities ¼ mile; increase all LNAV/VNAV DA to 1184 and all visibilities ¼ mile; increase all MDA 100 feet and increase LNAV Cat C/D visibility ⅜ mile.</p>	<p>MISSED APPROACH: Climb to 3000 direct COLBU and hold.</p>

AWOS-3 118.175	NASHVILLE APP CON 119.35 372.0	UNICOM 122.8 (CTAF) 0
--------------------------	--	---------------------------------



CATEGORY	A	B	C	D
LPV DA		1054-1	250 (300-1)	
LNAV/VNAV DA		1094-1½	290 (300-1½)	
LNAV MDA		1160-1	356 (400-1)	

SE-1, 19 MAY 2022 to 16 JUN 2022

SE-1, 19 MAY 2022 to 16 JUN 2022