

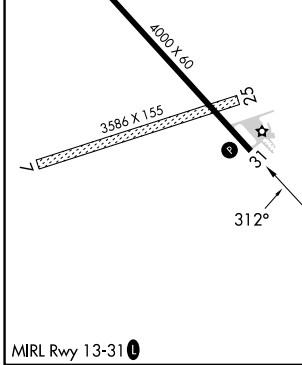
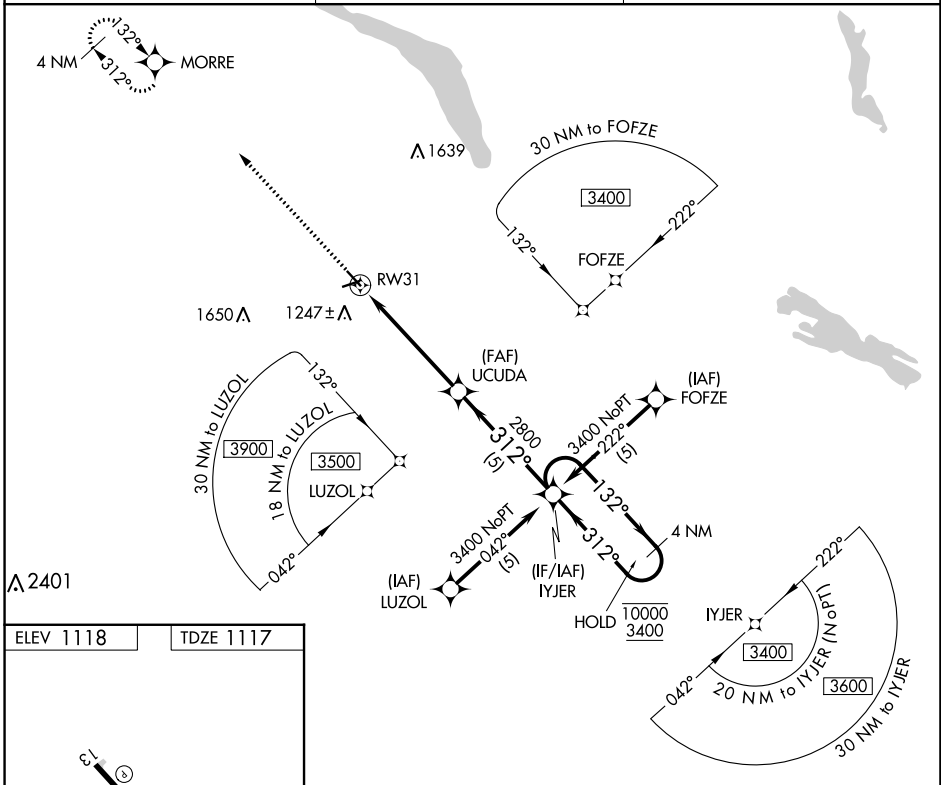
APP CRS	Rwy Idg	4000
312°	TDZE	1117
	Apt Elev	1118

RNAV (GPS) RWY 31

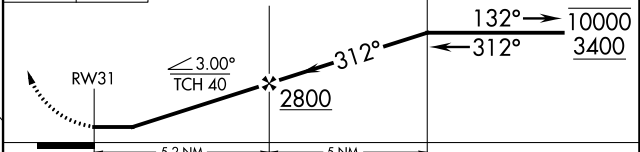
MILBANK MUNI (1D1)

RNP APCH.	MISSED APPROACH: Climb to 3400 direct MORRE and hold.
▽ Rwy 31 helicopter visibility reduction below 3/4 SM NA. When local altimeter setting not received, use Ortonville Muni/Martinson Fld altimeter setting and increase MDAs 20 feet. ▲ NA	

AWOS-3P 118.9	MINNEAPOLIS CENTER 128.5 306.2	AUNICOM 122.8 (CTAF) 0
-------------------------	--	----------------------------------



3400	MORRE	VGSI and descent angles not coincident (VGSI Angle 3.00/TCH 36).	IYJER	4 NM Holding Pattern
------	-------	--	-------	----------------------



CATEGORY	A	B	C	D
LNAV MDA	1720-1	603 (700-1)	NA	
CIRCLING	1720-1	602 (700-1)	NA	

NC-1, 22 FEB 2024 to 21 MAR 2024

NC-1, 22 FEB 2024 to 21 MAR 2024