

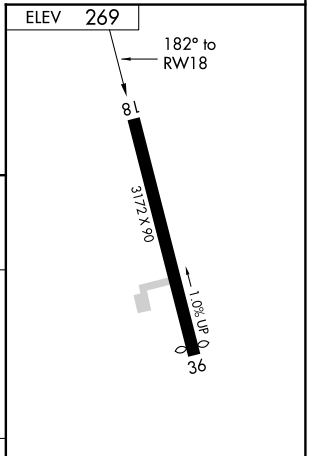
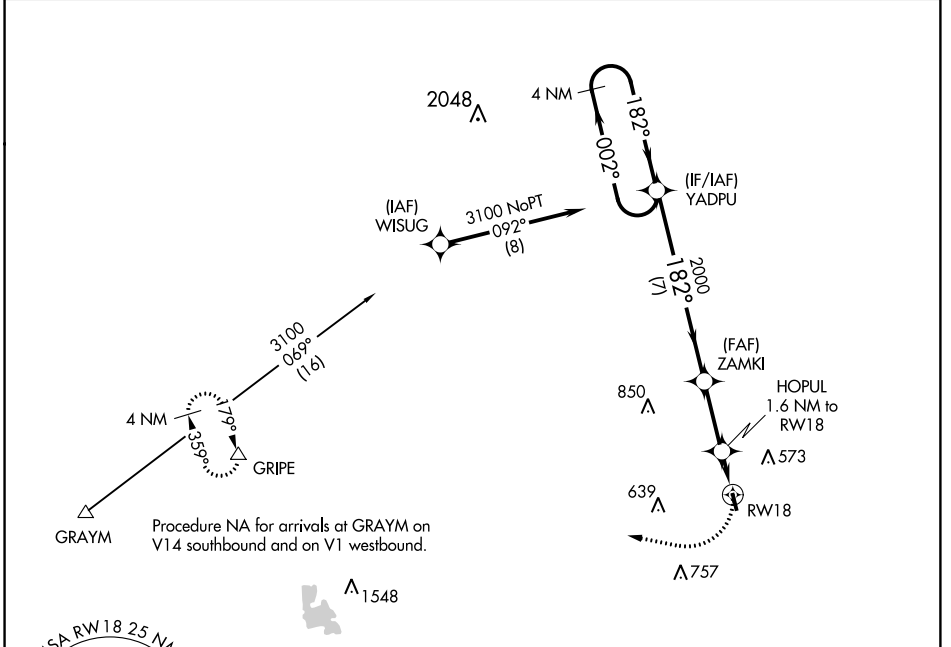
APP CRS 182°	Rwy Idg 3172
	TDZE N/A
	Apt Elev 269

RNAV (GPS)-A

HOPEDALE INDUSTRIAL PARK (1B6)

RNP APCH.	MISSED APPROACH: Climbing right turn to 3000 direct GRIPE and hold.
▼ Use Pawtucket altimeter setting: when not received, procedure NA. ▲ NA Procedure NA at night. Rwy 18 helicopter visibility reduction below 1 SM NA.	

SFZ AWOS-3 120.775	YANKEE APP CON 119.0	UNICOM 122.8 (CTAF)
------------------------------	--------------------------------	-------------------------------



4 NM Holding Pattern	YADPU	ZAMKI	HOPUL 1.6 NM to RW18	RW18
3100	← 002°	182° →	182°	
		2000	1040	
	7 NM	2.7 NM	1.6 NM	

CATEGORY	A	B	C	D
CIRCLING	880-1 611 (700-1)	980-1 711 (800-1)	1100-2½ 831 (900-2½)	NA

LIRL Rwy 18-36

NE-1, 27 JAN 2022 to 24 FEB 2022

NE-1, 27 JAN 2022 to 24 FEB 2022