

VOR/DME GON <b>110.85</b> Chan 45 (Y)	APP CRS <b>183°</b>	Rwy Idg TDZE Apt Elev	<b>N/A</b> <b>N/A</b> <b>7</b>
---	------------------------	--------------------------	--------------------------------------

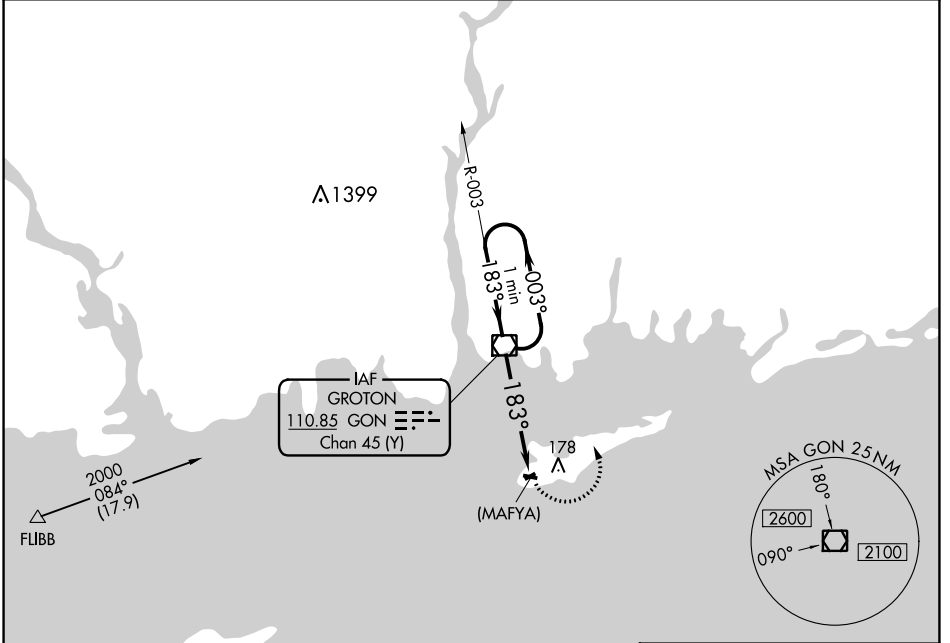
**VOR or GPS-A**  
ELIZABETH FLD (ØB8)

**▽** Use Groton-New London altimeter setting; when not received, use Block Island State altimeter setting.  
**▲ NA** Procedure NA at night.

MISSED APPROACH: Climbing left turn to 2000 direct GON VOR/DME and hold.

PROVIDENCE APP CON \*  
**125.75 319.2**

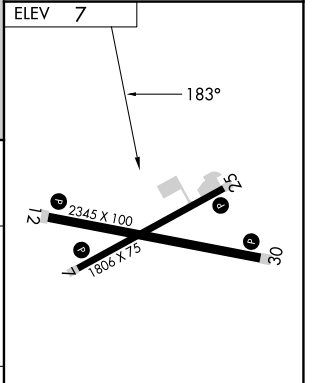
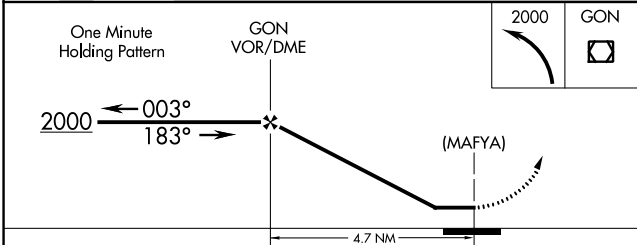
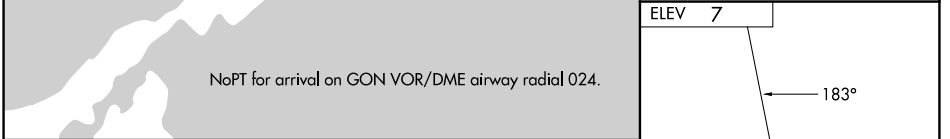
UNICOM  
**122.8 (CTAF) 0**



NE-2, 22 FEB 2024 to 21 MAR 2024

NE-2, 22 FEB 2024 to 21 MAR 2024

NoPT for arrival on GON VOR/DME airway radial 024.



CATEGORY	A	B	C	D
CIRCLING	540-1 533 (600-1)	580-1 573 (600-1)	600-1½ 593 (600-1½)	NA
BLOCK ISLAND STATE ALTIMETER SETTING MINIMUMS				
CIRCLING	600-1 593 (600-1)	640-1 633 (700-1)	660-1¾ 653 (700-1¾)	NA

REIL Rwy's 7, 12, 25 and 30 **0**  
MIRL Rwy's 7-25 and 12-30 **0**

FAF to MAP 4.7 NM

Knots	60	90	120	150	180
Min:Sec	4:42	3:08	2:21	1:53	1:34