

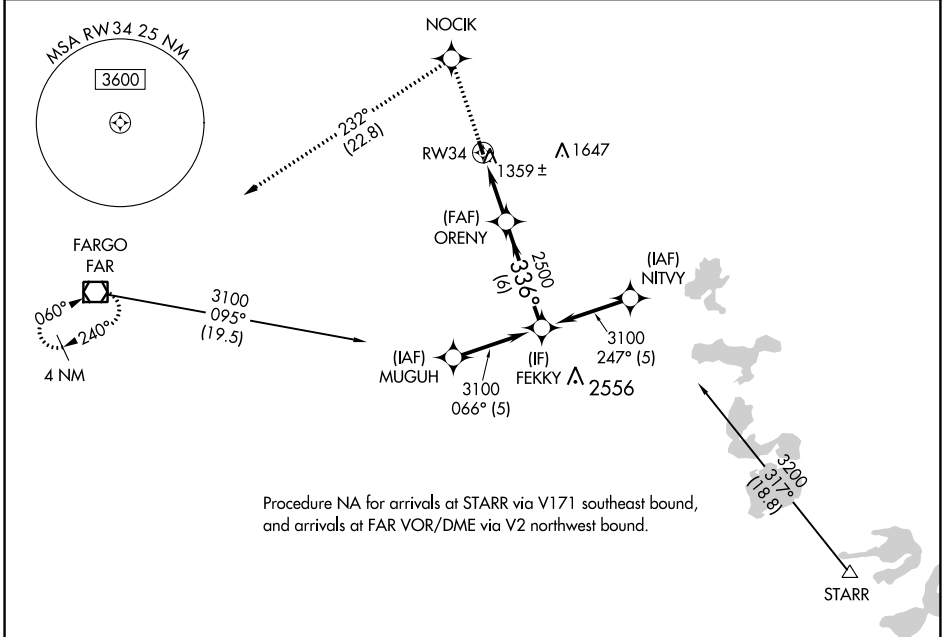
APP CRS <b>336°</b>	Rwy Idg <b>3398</b>
	TDZE <b>1207</b>
	Apt Elev <b>1210</b>

# RNAV (GPS) RWY 34

HAWLEY MUNI (Ø4Y)

<p>DME/DME RNP-0.3 NA. Use Fargo, ND allimeter setting.</p>	<p>MISSED APPROACH: Climb to 2700 direct NOCIK and left turn via 232° track to FAR VOR/DME and hold.</p>
---	--

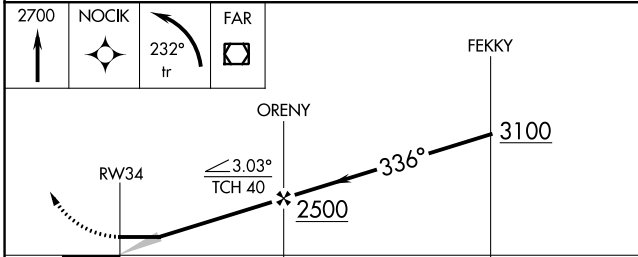
<p>FARGO APP CON <b>120.4 377.15</b></p>	<p>UNICOM <b>122.8 (CTAF)</b></p>
--	---------------------------------------



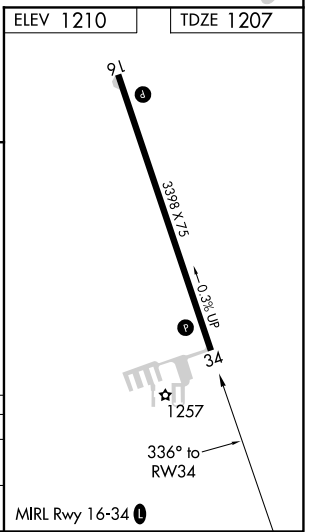
NC-1, 11 AUG 2022 to 08 SEP 2022

NC-1, 11 AUG 2022 to 08 SEP 2022

ELEV 1210	TDZE 1207
-----------	-----------



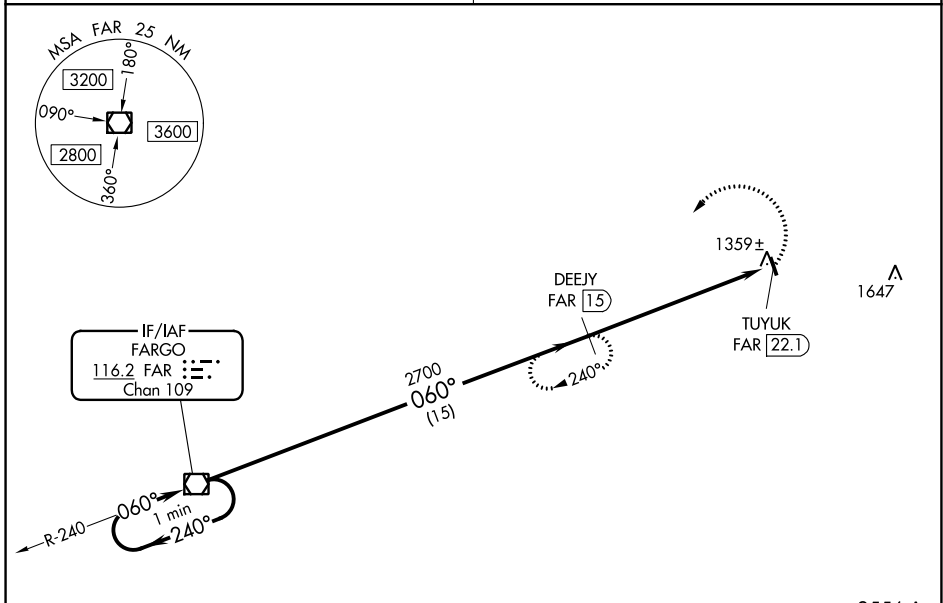
CATEGORY	A	B	C	D
LNVA MDA	1700-1	493 (500-1)	1700-1¼ 493 (500-1¼)	NA
CIRCLING	1760-1	550 (600-1)	1980-2¼ 770 (800-2¼)	NA



VOR/DME FAR <b>116.2</b> Chan <b>109</b>	APP CRS <b>060°</b>	Rwy Idg TDZE Apt Elev <b>1210</b>	<b>N/A</b> <b>N/A</b>
--	------------------------	---	--------------------------

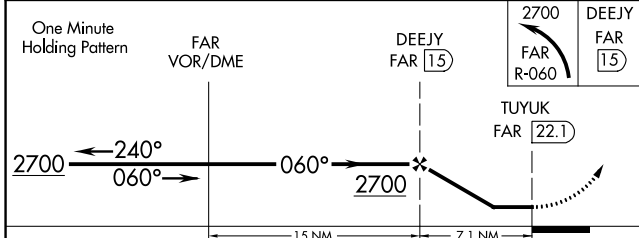
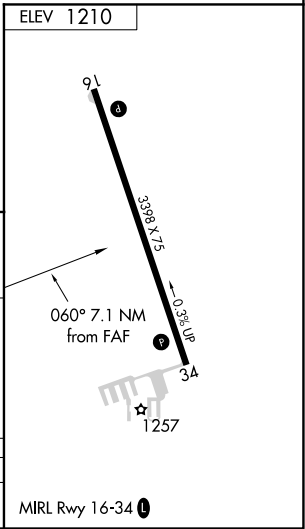
**VOR/DME-A**  
HAWLEY MUNI (04Y)

<p>▼ Use Fargo, ND altimeter setting. ▲ NA</p>	<p>MISSED APPROACH: Climbing left turn to 2700 via FAR VOR/DME R-060 to DEEJY/15 DME and hold.</p>
<p>FARGO APP CON <b>120.4 377.15</b></p>	<p>UNICOM <b>122.8 (CTAF)</b></p>



IF/IAF  
FARGO  
**116.2 FAR**  
Chan **109**

NoPT for arrival on FAR VOR/DME  
airway radials 178 CW 340.



CATEGORY	A	B	C	D
CIRCLING	1760-1 550 (600-1)	1760-1¼ 550 (600-1¼)	1980-2¼ 770 (800-2¼)	NA

NC-1, 11 AUG 2022 to 08 SEP 2022

NC-1, 11 AUG 2022 to 08 SEP 2022